

### HVAC ELECT. REQUIREMENTS

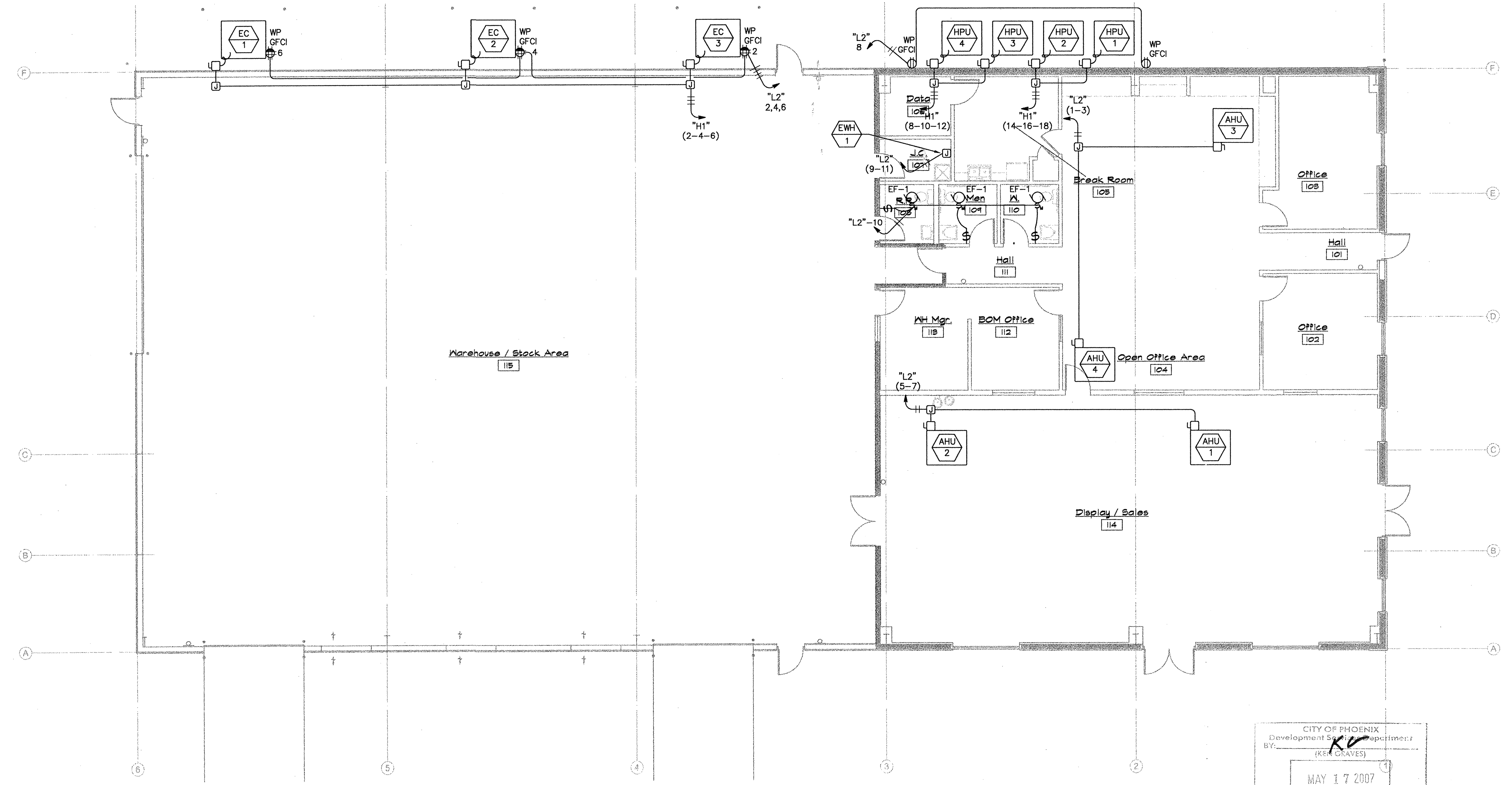
● ELECTRICAL CONTRACTOR SHALL PROVIDE CORRECT SIZE / TYPE / VOLTAGE / QUANTITY OF DUAL-ELEMENT, TIME-DELAY FUSE(S) SIZED PER HVAC EQUIPMENT MANUFACTURER UNLESS OTHERWISE SPECIFIED BY UNIT NAMEPLATE/MANUFACTURER DATA.

◆ ALL FEEDERS SHALL BE IN ACCORDANCE WITH THE ELECTRICAL SYSTEM SPEC'S (3.2).

UNIT	VOLTS/Φ	FULL LOAD AMPS	DISCONNECTING MEANS ●	CONDUCTORS / CONDUIT ◆
EC 1-3	480/3	4.0	HEAVY DUTY 30AMP 250V 3P/3F NEMA 3R DISCONNECT SWITCH	(3)#12's Cu., (1)#12 Cu. E.G. - 3/4" C.
AHU 1-4	208/1	5.1	HEAVY DUTY 30AMP 250V 2P/2F NEMA 1 DISCONNECT SWITCH	(2)#10's Cu., (1)#10 Cu. E.G. - 3/4" C.
HPU 1-4	480/3	9.3	HEAVY DUTY 30AMP 250V 3P/3F NEMA 3R DISCONNECT SWITCH	(3)#10's Cu., (1)#10 Cu. E.G. - 3/4" C.
EWB 1	208/1	3	CIRCUIT BREAKER W/ LOCK-OFF DEVICE AS MEANS OF DISCONNECT	(2)#12's Cu., (1)#12 Cu. E.G. - 3/4" C.

### GENERAL NOTES

- REFER TO ELECTRICAL SPECIFICATIONS FOR ADDITIONAL REQUIREMENTS AND COMPLETE CONTRACTUAL OBLIGATIONS.
- THE ELECTRICAL CONTRACTOR SHALL (PRIOR TO HIS BID) a) VISIT THE SITE AND FIELD VERIFY ALL EXISTING CONDITIONS AND b) TAKE ALL CONSIDERATIONS INTO ACCOUNT AT THE TIME OF BID. NO ADDITIONAL CONSIDERATIONS WILL BE GRANTED THE CONTRACTOR AFTER THE BID IS ACCEPTED.
- ALL ELECTRICAL METALLIC TUBING (EMT), RIGID NON-METALLIC CONDUIT, FLEXIBLE METALLIC CONDUIT, FLEXIBLE NON-METALLIC CONDUITS, "SEALTIGHT" TYPE CONDUITS AND ALL OTHER CONDUITS THAT DO NOT CONTAIN A CODE SIZED GROUND WIRE SHALL HAVE A CODE SIZED BOND WIRE INSTALLED WITH THE CIRCUIT CONDUCTORS.
- RECEPTACLES LOCATED WITHIN 6'-0" OF SINKS OR WATER SHALL BE CONNECTED EITHER TO A GROUND FAULT CIRCUIT INTERRUPTER TYPE CIRCUIT BREAKER OR TO A GROUND FAULT CIRCUIT INTERRUPTER TYPE RECEPT.
- PRIOR TO ROUGH-IN, THE ELECTRICAL CONTRACTOR SHALL COORDINATE THE EXACT LOCATION OF ALL HVAC UNITS AND SUPPLY AIR DUCT SMOKE DETECTORS WITH THE MECHANICAL DRAWINGS.
- PROVIDE ROOF TOP WEATHER PROOF G.F.C.I. WITHIN 25'-0" OF ALL ROOF TOP HVAC EQUIPMENT IN ACCORDANCE WITH NEC ARTICLE "HEATING, AIR-CONDITIONING AND REFRIGERATION EQUIPMENT OUTLET". THE ELECTRICAL CONTRACTOR IS RESPONSIBLE FOR COORDINATION OF THESE RECEPTACLES IN THE FIELD REGARDLESS PLAN LAYOUT.
- ALL DISCONNECTS SHALL BE OF THE HEAVY DUTY TYPE AND FUSED PER THE NAMEPLATE RATING OF THE HVAC UNIT OR MOTOR.
- THE EC SHALL - PRIOR TO ROUGH-IN, FIELD VERIFY ALL HVAC VOLTAGES AND AMPERAGES AGAINST PLAN REQUIREMENTS. FAILURE TO VERIFY AND NOTIFY ENGINEER / ARCHITECT PRIOR TO ROUGH-IN SHALL INDICATE THAT THE EC SHALL ASSUME ALL RESPONSIBILITY FOR DESIGN AND INSTALLATION REQUIREMENTS.
- THE ELECTRICAL CONTRACTOR SHALL ENSURE FINAL COORDINATION OF THE MANUFACTURERS RECOMMENDED FUSE SIZE FOR HVAC EQUIPMENT WITH THE SIZE DISCONNECT PRIOR TO OR DURING ROUGH-IN. ADVISE ENGINEER IF CHANGES IN THE FINAL SELECTION OF HVAC EQUIPMENT HAVE IMPACTED DISCONNECT, BREAKER, OR CONDUCTOR SIZE.
- ALL ROOF TOP UNITS EXPOSED TO AMBIENT TEMPERATURES AND WEATHER SHALL HAVE NEMA 3R MINIMUM RATED DISCONNECTS.
- MAXIMUM TAP CONDUCTOR LENGTH SHALL BE 25'-0" PER NEC ARTICLE "FEEDER TAPS" AND "TRANSFORMER SECONDARY CONDUCTORS" AND SHALL NOT BE SMALLER THAN 1/3 THE AMPACITY OF FEEDER CONDUCTORS.
- ELECTRICAL CONTRACTOR SHALL COORDINATE WITH MECHANICAL CONTRACTOR AND FIRE ALARM CONTRACTOR REGARDING SMOKE DUCT DETECTORS TO INCLUDE PURCHASE, INSTALLATION, AND FINAL CONNECTIONS.
- THE ELECTRICAL CONTRACTOR IS RESPONSIBLE TO COORDINATE WITH THE OWNER OR OTHER SUPPLIERS REGARDING ANY REQUIREMENTS FOR MOTOR STARTERS IN ADDITION TO THAT WHICH IS INDICATED FOR THE HVAC SYSTEM. THIS INCLUDES FURNISH AND INSTALL STARTERS TO INTERFACE WITH ANY ENERGY MANAGEMENT SYSTEM OR OTHER SPECIAL SYSTEMS.
- ELECTRICAL CONTRACTOR SHALL PROVIDE CORRECT SIZE / TYPE / VOLTAGE / QUANTITY OF DUAL-ELEMENT, TIME-DELAY FUSE(S) SIZED PER HVAC EQUIPMENT MANUFACTURER UNLESS OTHERWISE SPECIFIED BY UNIT NAMEPLATE / MANUFACTURER DATA.



North Electrical HVAC Plan  
1/8" = 1'-0"

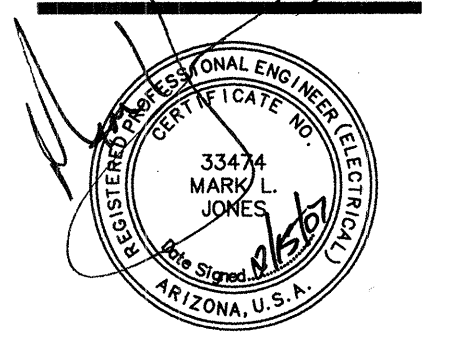
CITY OF PHOENIX  
Development Services Department  
BY: (REVISED)  
MAY 17 2007

Project Contact/Designer: Everardo Ibarra  
Project # 06685  
**HAWKINS DESIGN GROUP INC.**  
ELECTRICAL CONSULTING ENGINEERS  
2822 SOUTH VINEYARD AVENUE SUITE 107  
MESA, ARIZONA 85204  
PH: 480.813.9000 FAX: 480.813.9001  
EMAIL: email@hawkinsdg.com

THE DRAWING, SPECIFICATIONS AND OTHER DOCUMENTS PREPARED BY THE ARCHITECT FOR THIS PROJECT ARE INSTRUMENTS OF THE ARCHITECT'S PROFESSIONAL SERVICE WITH RESPECT TO THIS PROJECT. THE ARCHITECT SHALL BE RESPONSIBLE FOR THE DESIGN OF THE PROJECT AND SHALL NOT BE RESPONSIBLE FOR STATUTORY AND OTHER RESERVED RIGHTS, INCLUDING THE COPYRIGHT.

**AEC**  
design building concepts  
29756 Desert Willow Blvd  
Queen Creek, Arizona 85243  
ph. 480.882.9833  
fax. 480.445.9795  
www.aecdesigns.com  
email: brian@aecdesigns.com

Architecture Plus L.L.C.  
GARDEN CITY · DODGE CITY · DENVER  
402 E. FULTON 620.276.3372  
GARDEN CITY, KANSAS 67846  
FAX 620.276.7579  
archplus@architecturplus.net



NATIONAL WATER WORKS  
NORTH PHOENIX BRANCH  
Parcel #209-03-104 A  
2140 W Williams Drive  
Phoenix, Arizona

Job number  
Title  
ELECTRICAL HVAC PLAN  
Sheet number  
E5.1

Sheet number  
E5.1