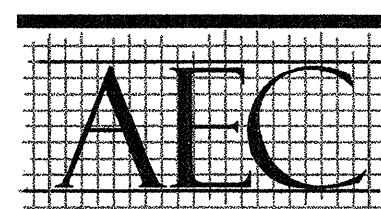


THE DRAWING, SPECIFICATIONS AND OTHER DOCUMENTS PREPARED BY THE ARCHITECT FOR THIS PROJECT ARE HEREBY OFFERED TO THE ARCHITECT FOR USE SOLELY WITH RESPECT TO THIS PROJECT. THE ARCHITECT SHALL BE DEEMED TO HAVE ACCEPTED THE ARCHITECT'S RESPONSIBILITY TO RETAIN ALL COMMON LAW, STATUTORY, AND OTHER RIGHTS, INCLUDING THE COPYRIGHT.



design building concepts  
 29756 Desert Willow Blvd  
 Queen Creek, Arizona 85243  
 ph. 480.882.9833  
 fax. 480.445.9795  
 www.aecdesigns.com  
 email: brian@aecdesigns.com



Architecture Plus L.L.C.  
 GARDEN CITY BOULDER CITY DENVER  
 ARCHITECTURE  
 PLANNING  
 INTERIORS

401 E. TRULSON 602763872  
 GARDEN CITY, KANSAS 67846  
 602763872  
 archplus@architectureplus.net

date  
 September 2006

drawn by  
 Brian

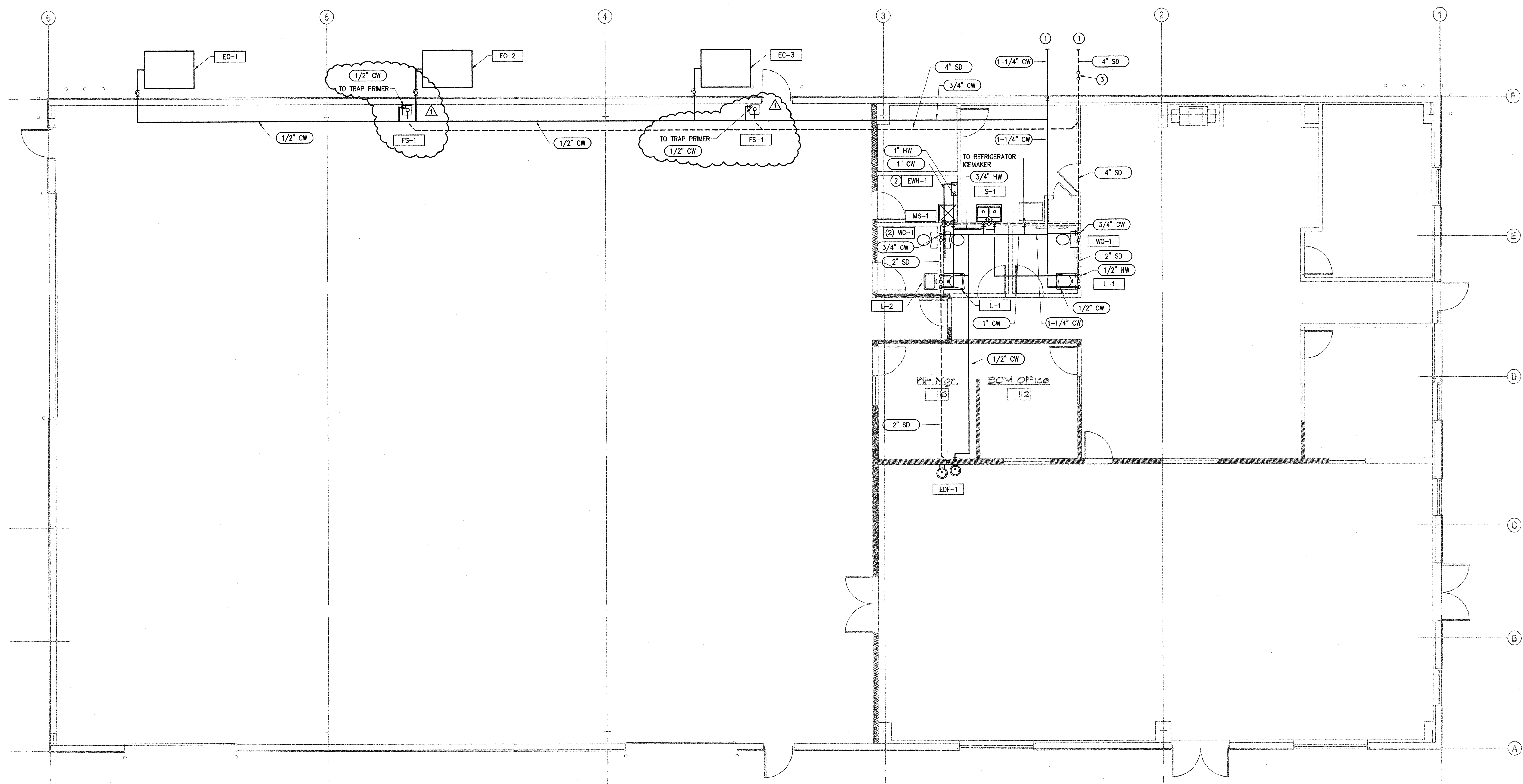
CITY COMMENTS 04-30-07

NATIONAL WATER WORKS  
 NORTH PHOENIX BRANCH  
 Parcel #209-03-104 A  
 2140 W Williams Drive  
 Phoenix, Arizona

job number  
 0658

title  
 PLUMBING PLAN

sheet number  
 P1



Plumbing Plan  
 North 3/16" = 1'-0"

SEE RISER DIAGRAMS ON SHEET MP3 FOR DETAILED PLUMBING PIPING SIZING.

GENERAL NOTES

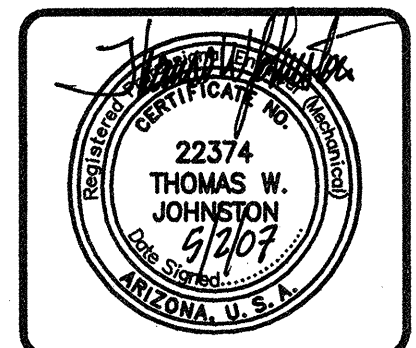
- HOT AND COLD WATER PIPING TO BE TYPE L HARD DRAWN COPPER. SANITARY DRAIN AND VENT PIPING TO BE APPROVED ABS. SLOPE SANITARY DRAIN PIPE 1/4-INCH PER FOOT.
- FIELD VERIFY EXISTING PIPE ROUTES, SIZES AND SLOPE DIRECTION.
- SAW CUT CONCRETE FLOOR AS REQUIRED TO ACCOMMODATE NEW SANITARY DRAIN PIPING WHERE REQUIRED.
- PROVIDE NEW PLUMBING FIXTURES, PIPING AND VALVES. PROVIDE P-TRAP PIPE INSULATION KITS ON ALL SINKS. PROVIDE DIELECTRIC UNIONS ON ALL CONNECTIONS BETWEEN DISSIMILAR METALS. SEE FIXTURE SCHEDULE FOR ROUGH-IN CONNECTIONS. SEE RISER DIAGRAMS 1/MP3, 2/MP3.
- PROVIDE 1-INCH FIBERGLASS INSULATION WITH ALL SERVICE JACKET ON ALL DOMESTIC HOT WATER PIPING.
- PROVIDE O&M MANUALS FOR ALL EQUIPMENT TO OWNER.

KEY NOTES

- SEE SITE/ CIVIL PLANS FOR CONTINUATION.
- PROVIDE INSTANTANEOUS ELECTRIC HOT WATER HEATER WITH INTEGRAL HEAT TRAPS. INSTALL PER MANUFACTURER. SEE DETAIL C/MP2 AND PLUMBING FIXTURE SCHEDULE.
- PROVIDE 2-WAY CLEANOUT. SEE DETAIL D/MP2.

CITY OF PHOENIX  
 Development Services Department  
 BY: ACAS (ANTHONY GASCA)  
 MAY 23 2007  
This set of plans has been reviewed for PLUMBING/MECHANICAL requirements and in accordance with Building Permits and shall be kept at the construction site. Such review shall not prevent the Building Official from requiring correction of errors in the plans where such errors are subsequently found to be in violation of any law or ordinance.

JEC PROJECT NO. 06095



JOHNSTON ENGINEERING COMPANY  
 HEATING, VENTILATING, AIR CONDITIONING, PLUMBING  
 9777 NORTH 91ST STREET, SUITE 100  
 SCOTTSDALE, ARIZONA 85258  
 PH (480) 443-8773 FAX (480) 443-4591  
 E-mail: design@jehvac.com

