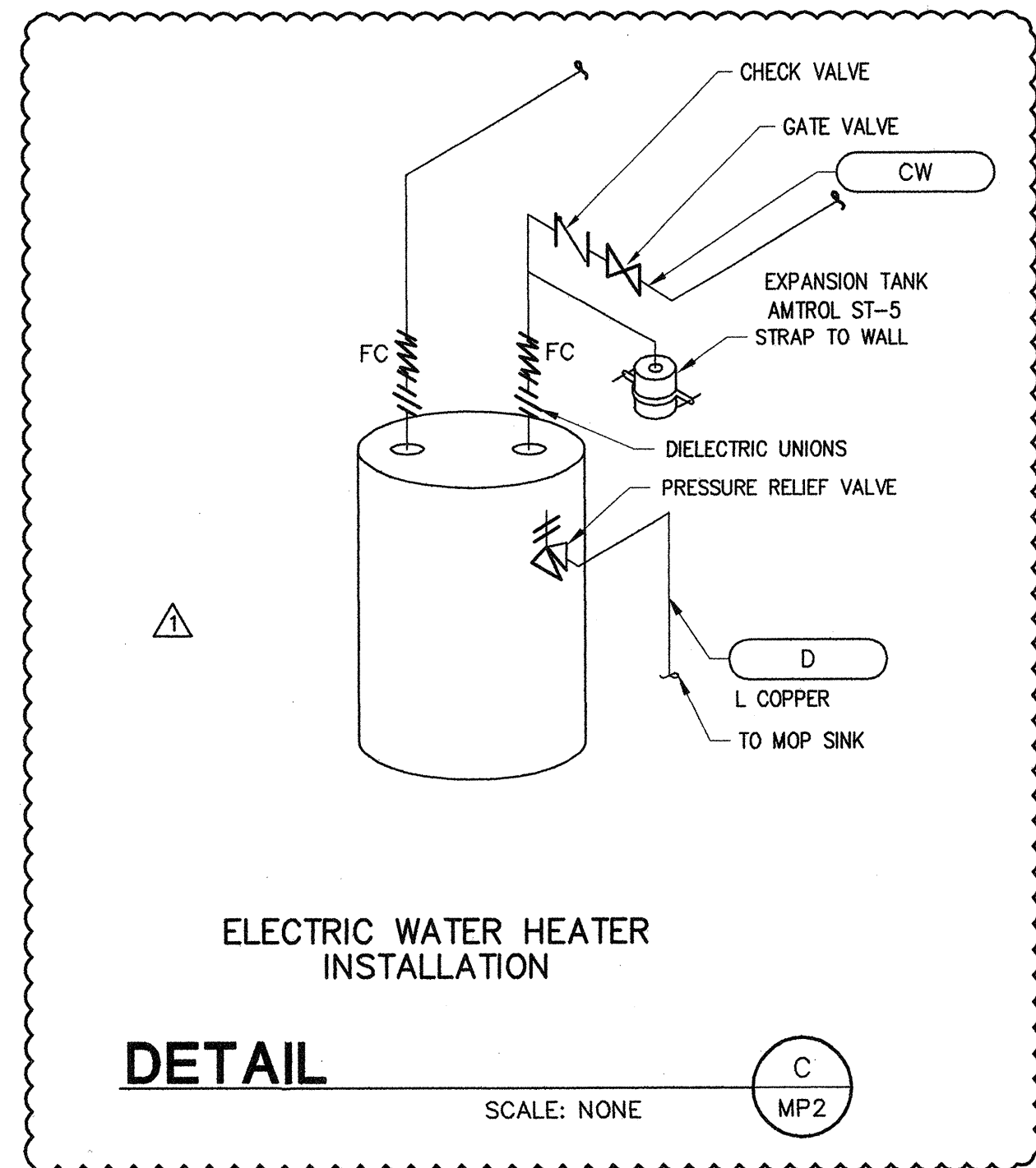
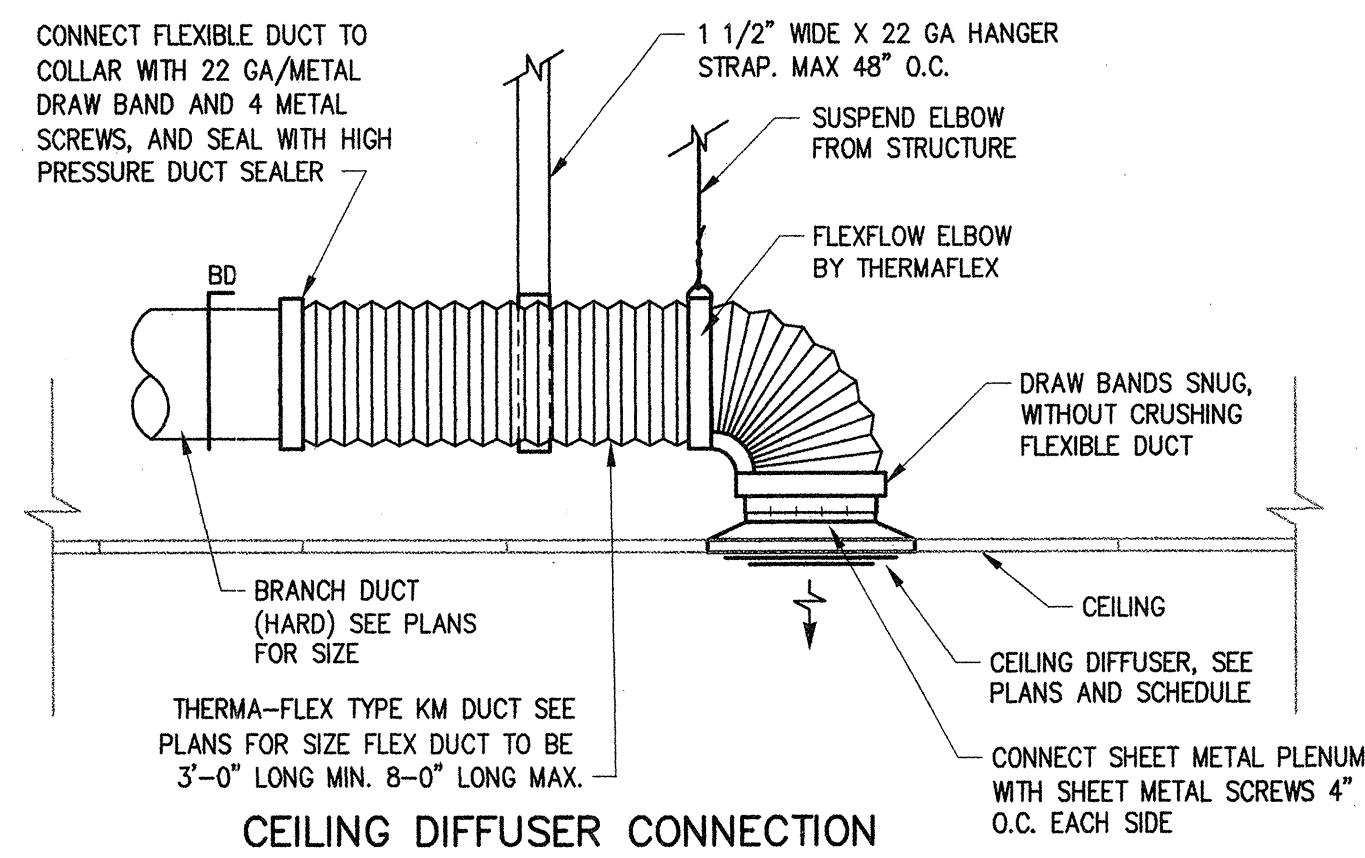


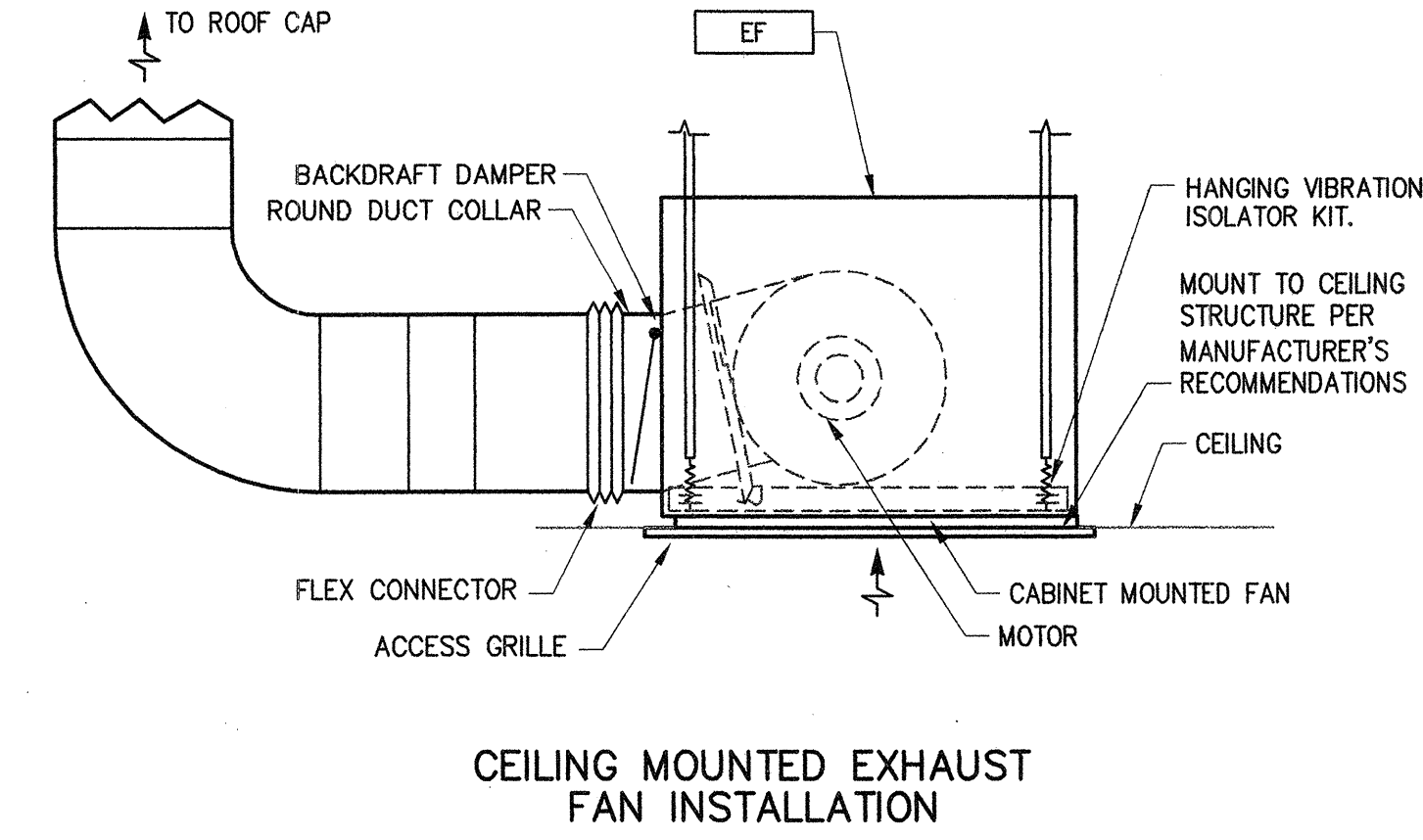
DETAIL SCALE: NONE (D) MP2



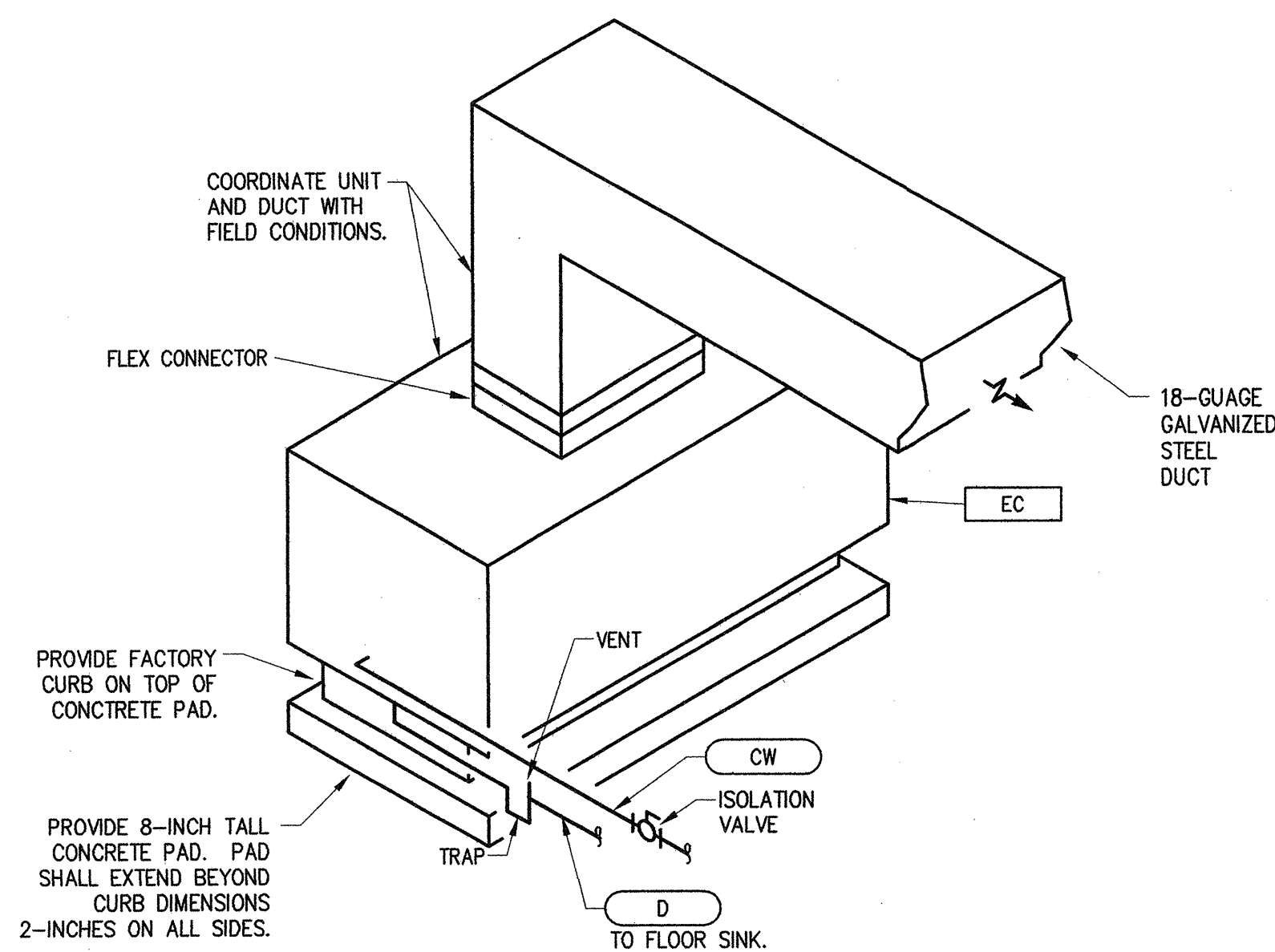
DETAIL SCALE: NONE (C) MP2



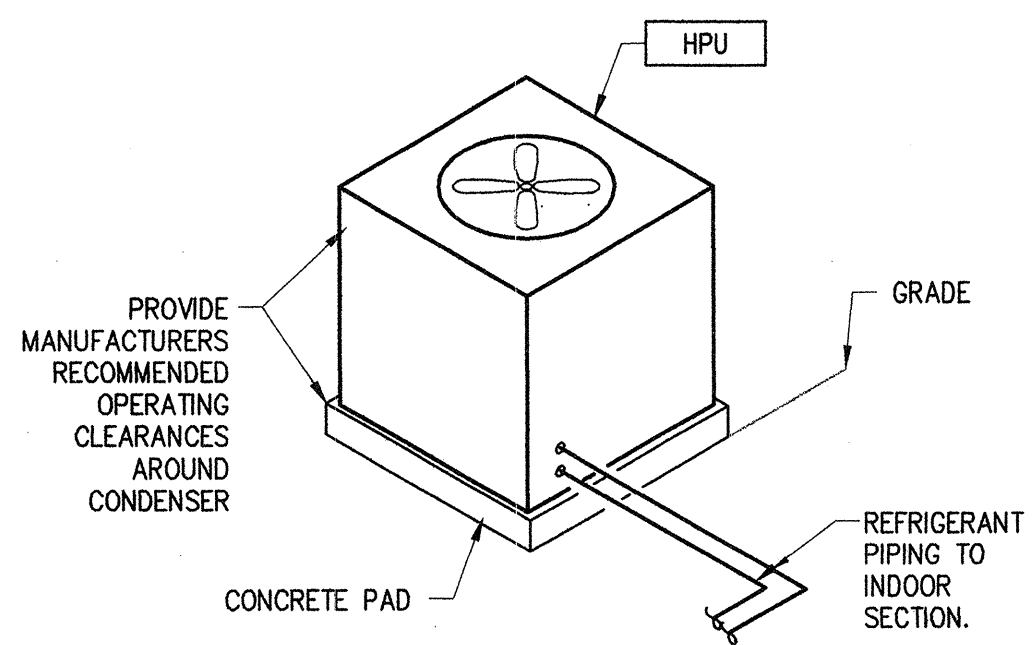
DETAIL SCALE: NONE (B) MP2



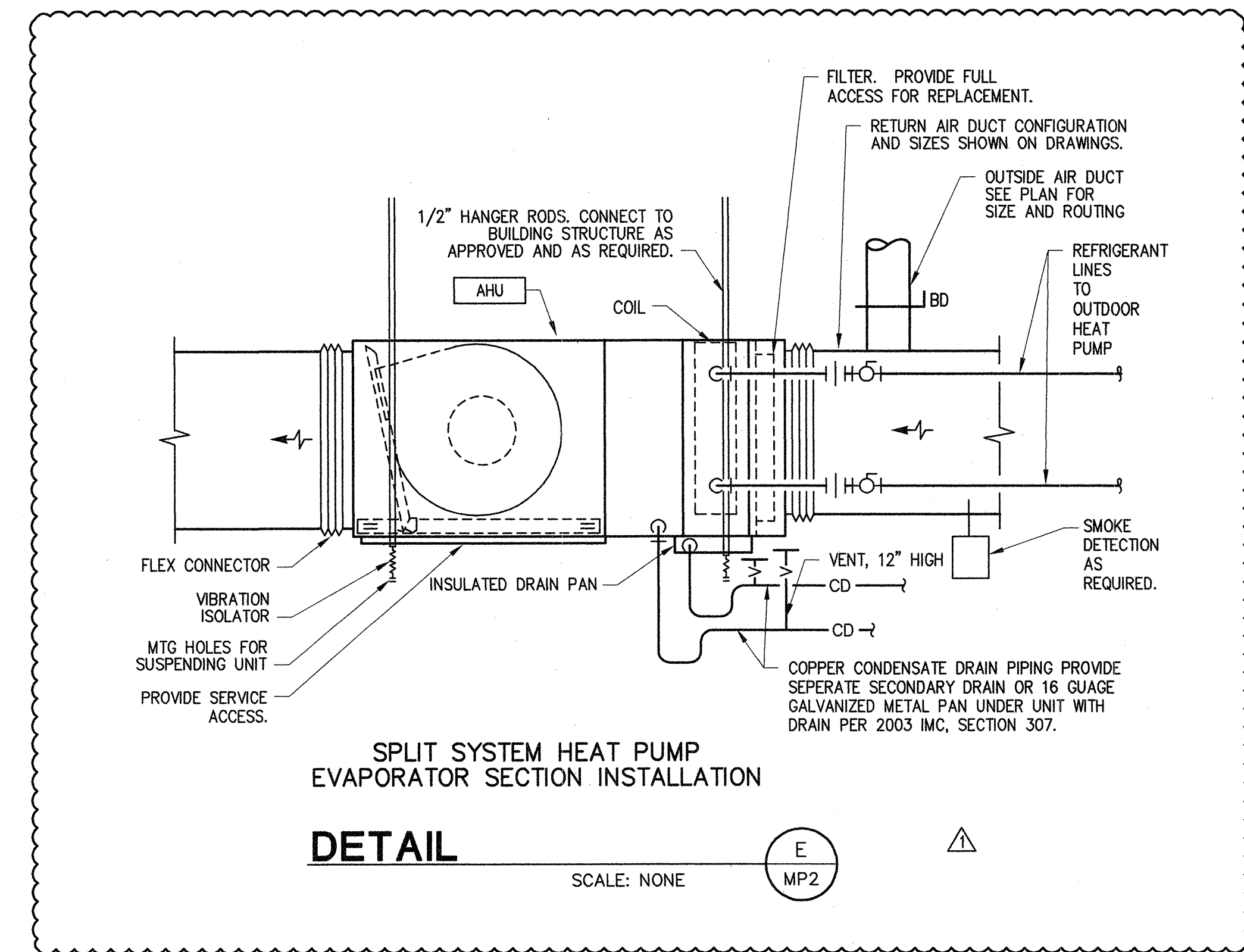
DETAIL SCALE: NONE (A) MP2



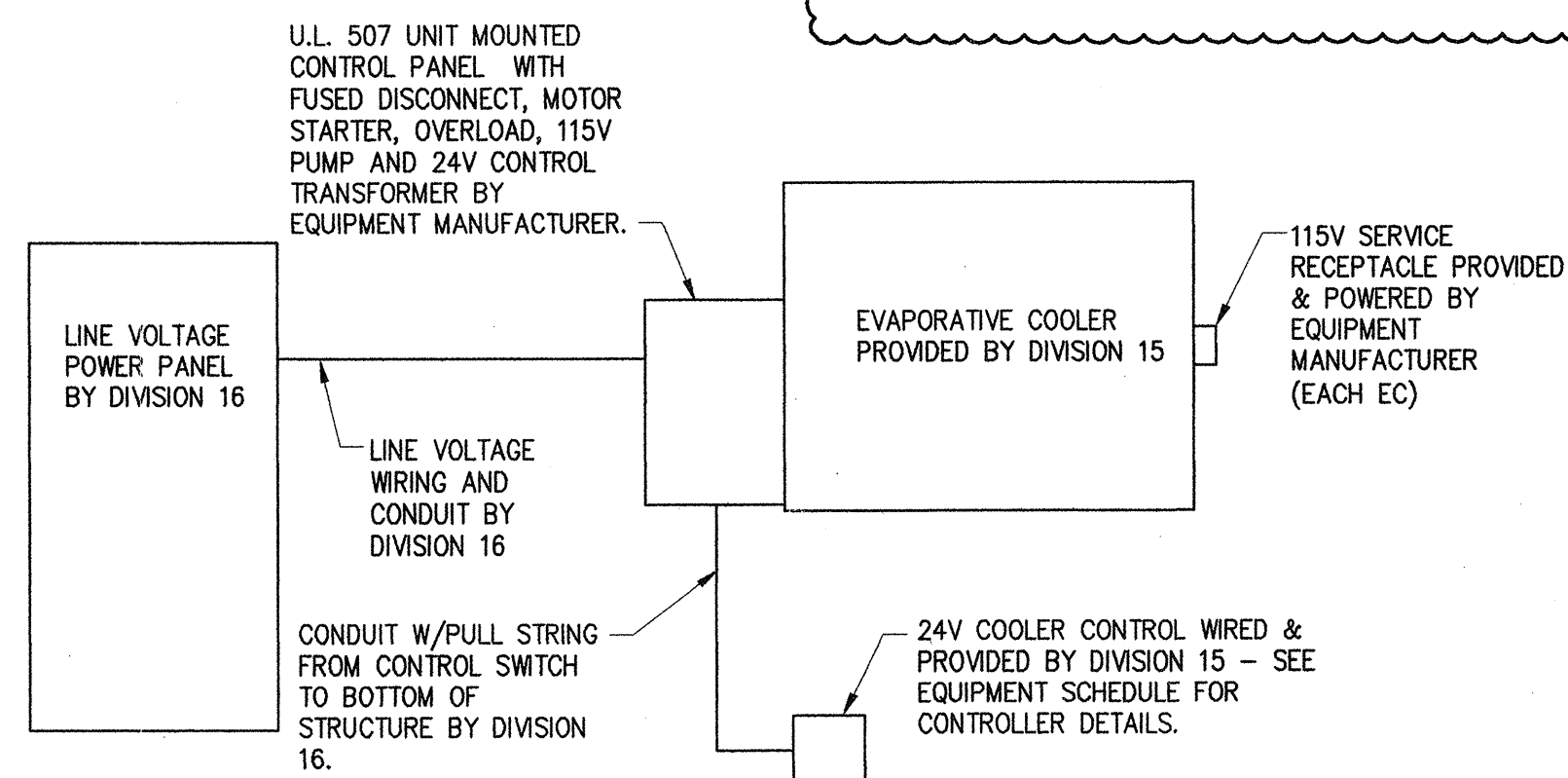
DETAIL SCALE: NONE (G) MP2



DETAIL SCALE: NONE (F) MP2



DETAIL SCALE: NONE (E) MP2



DETAIL SCALE: NONE (H) MP2

THE DRAWING, SPECIFICATIONS AND OTHER DOCUMENTS PREPARED BY THE ARCHITECT FOR THIS PROJECT ARE HEREBY OFFERED TO THE ARCHITECT FOR USE SOLELY WITH RESPECT TO THIS PROJECT. THE ARCHITECT SHALL BE DEEMED THE AUTHOR OF THESE DOCUMENTS AND SHALL RETAIN ALL COMMON LAW, STATUTORY AND OTHER RESERVED RIGHTS, INCLUDING THE COPYRIGHT.

AEC
design building concepts
29756 Desert Willow Blvd
Queen Creek, Arizona 85243
ph. 480.882.9833
fax. 480.445.9795
www.aecdesigns.com
email: brian@aecdesigns.com

Architecture Plus L.L.C.
GARDEN CITY DESIGN CENTER
ARCHITECTURE
PLANNING
INTERIORS
402 E. FLINTON 620.726.8272
GARDEN CITY, KANSAS 67846
FX 620.726.0679
archplus@architectureplus.net

date
September 2006
drawn by
Brian

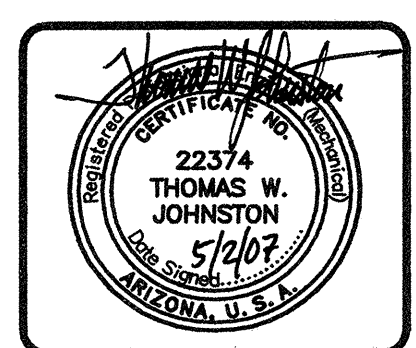
△ CITY COMMENTS 04-30-07

NATIONAL WATER WORKS
NORTH PHOENIX BRANCH
Parcel #209-03-104 A
2140 W Williams Drive
Phoenix, Arizona

job number
0658
title
MECHANICAL AND PLUMBING
DETAILS

CITY OF PHOENIX
Development Services Department
BY: **ACAS**
(ANTHONY CASCA)
MAY 23 2007
This set of plans has been reviewed for PLUMBING/MECHANICAL requirements prior to issuance of Scaling Permit and shall be kept at the construction site. Such review shall not prevent the Building Official from requiring correction of errors in the plans where such errors are subsequently found to be in violation of any law or ordinance.

JEC PROJECT NO. 06095



JOHNSTON ENGINEERING COMPANY
HEATING, VENTILATING, AIR CONDITIONING, PLUMBING
9777 NORTH 91ST STREET, SUITE 100
SCOTTSDALE, ARIZONA 85258
PH (480) 443-8773 FAX (480) 443-4591
E-mail: design@jehvac.com

sheet number
MP2