

GRADING & DRAINAGE PLAN with OFFSITE IMPROVEMENTS (combination) NATIONAL WATER WORKS NORTH PHOENIX BRANCH

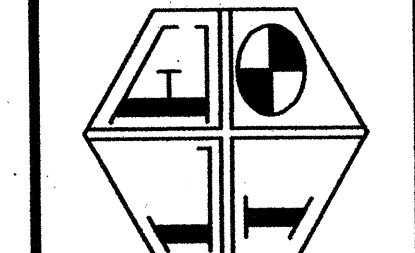
Parcel #209-03-104 A
2140 W Williams Drive, Phoenix, Arizona
SECTION 13, TOWNSHIP 4 NORTH, RANGE 2 EAST OF THE GSRBM, MARICOPA COUNTY, ARIZONA

RETENTION CALCULATION
 $VR=C(P/12)A$
 $C=0.90$
 $I=0.5"$ (1st FLUSH)
 $A=2.484A$
 $VR=(0.90)(0.5/12)2.484$
 $VR=4.057CF=0.093$ ACRE-Feet
RETENTION PROVIDED
 $VP=4,149CF$

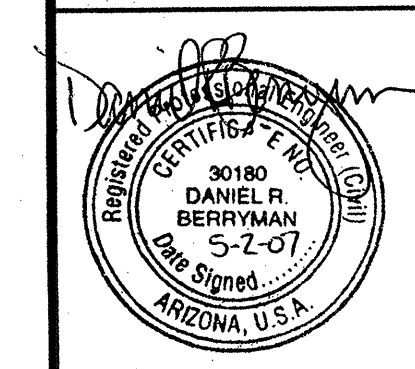
NOTE: THIS MAP OR PLAN IS NOT TO BE USED, RELIED UPON, OR CONSIDERED COMPLETE OR READY FOR CONSTRUCTION, UNLESS STAMPED BY A PROFESSIONAL FROM LEMME ENGINEERING.
 COPYRIGHT NOTICE: THIS DRAWING IS COPYRIGHTED AND ANY ELECTRONIC COPY PROVIDED, IS FOR THE SPECIFIC USE INTENDED OF THE PROJECT AND MAY NOT BE UTILIZED FOR ANY OTHER PROJECTS UNLESS WRITTEN AUTHORIZATION IS RECEIVED FROM LEMME ENGINEERING.

PRELIMINARY
 APPROVED

PLANNING - CIVIL ENGINEERING - SURVEYING
LEMME ENGINEERING INC.
 3608 WEST BETHANY HOME ROAD
 PHOENIX, ARIZONA 85019
 PHONE (602) 841-6804 FAX (602) 841-6351

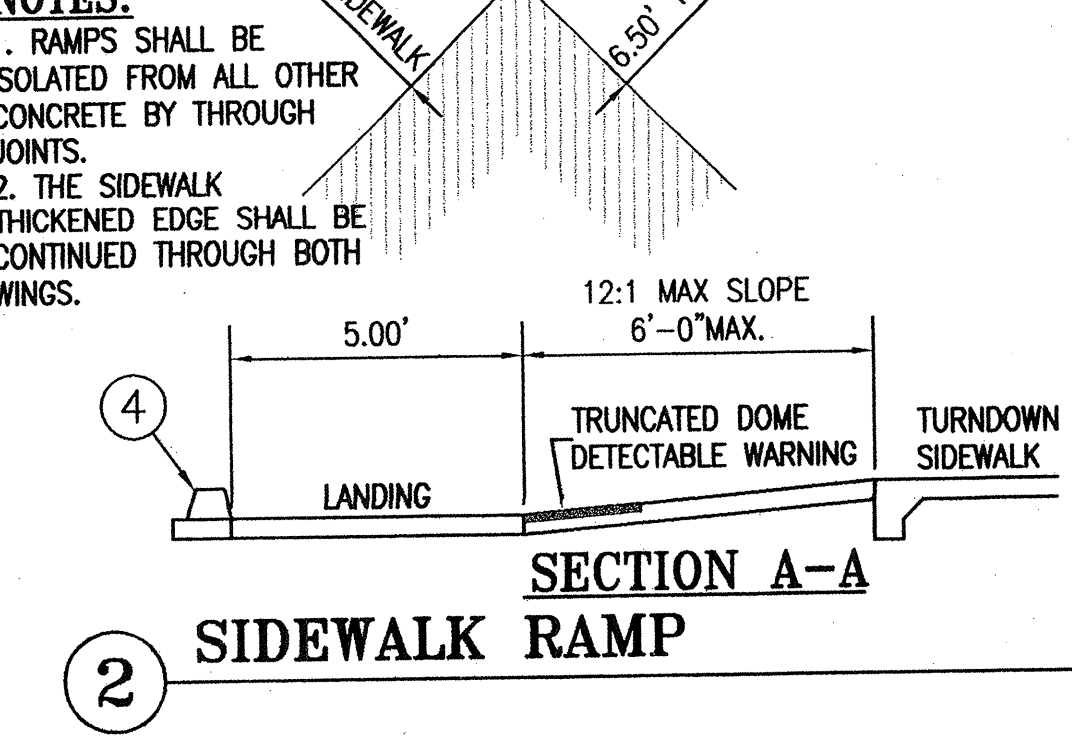
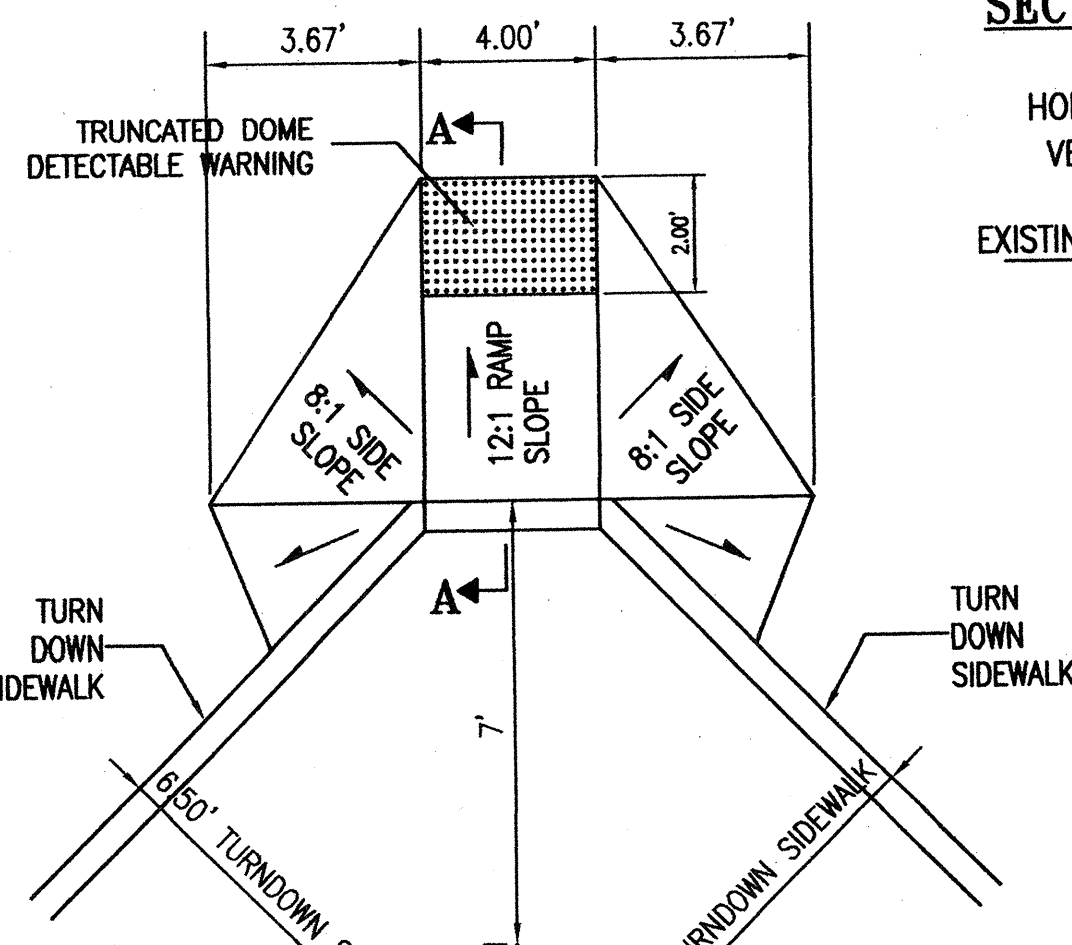
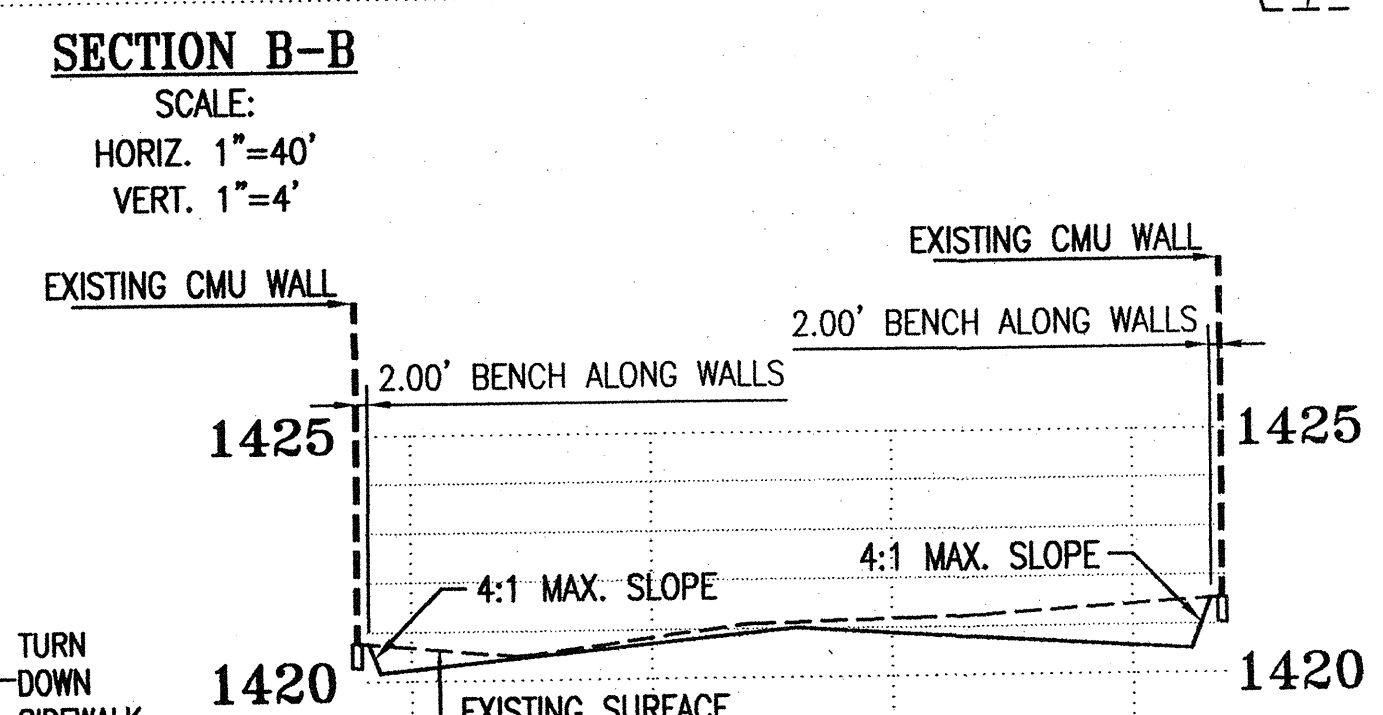
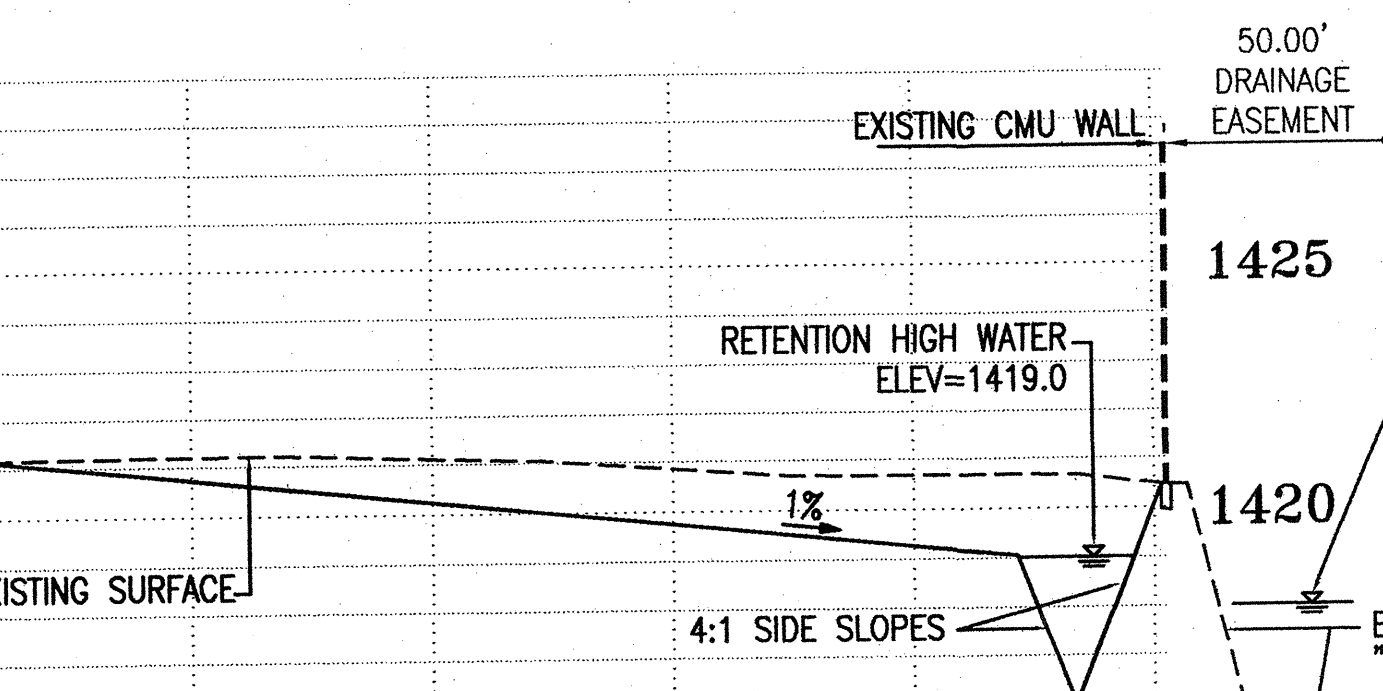
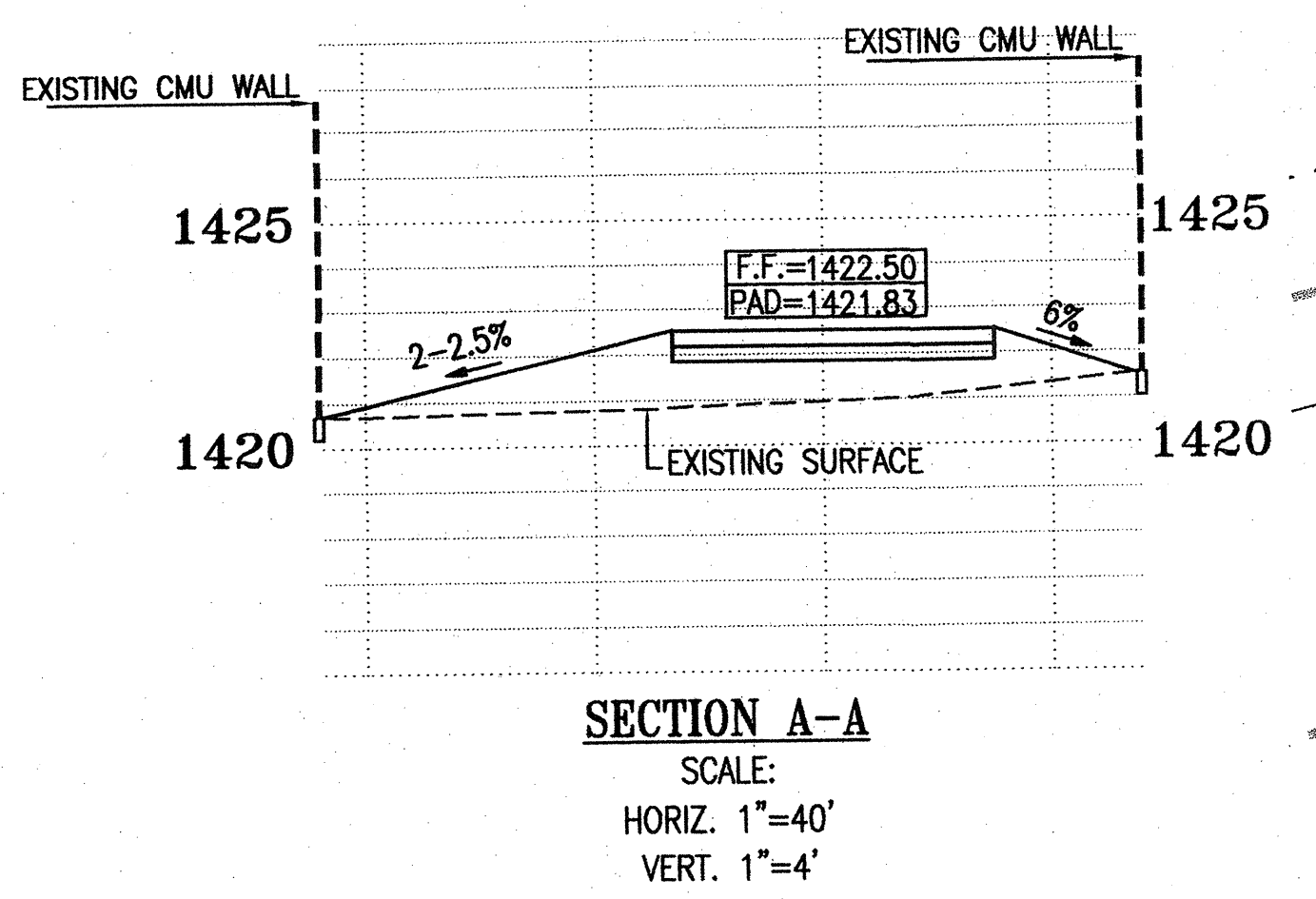


GRADING & DRAINAGE PLAN
NATIONAL WATER WORKS
NORTH PHOENIX BRANCH
 2140 W Williams Drive, Phoenix, AZ



DESIGNED BY: DB
 DRAWN BY:
 SCALE:
 HORIZONTAL=1"=40'
 VERTICAL=1"=4'
 SHEET 2 OF 2
 DATE 05-02-07
 W.O. 06-735

- LEGEND**
- ⊙ = FOUND BRASS CAP IN HAND HOLE
 - ⊙ = FOUND BRASS CAP FLUSH
 - ⊙ = FOUND CHISELED "X" ON WALK
 - ⊙ = SET 1/2" REBAR WITH CAP LS 28232
 - ⊙ = SET CHISELED "X" ON WALK
 - ⊙ = FIRE HYDRANT
 - ⊙ = WATER VALVE
 - ⊙ = GAS MARKER
 - ⊙ = SANITARY SEWER MANHOLE
 - ⊙ = SIGN
 - ⊙ = TRAFFIC SIGNAL
 - ⊙ = EXISTING STREET LIGHT
 - ⊙ = TRANSFORMER PAD
 - ⊙ = ELECTRIC BOX
 - ⊙ = TELEPHONE RISER
 - ⊙ = TREE
 - ⊙ = CHAIN LINK FENCE
 - ⊙ = DIP WATER LINE
 - ⊙ = 8" VCP SEWER LINE
 - ⊙ = 4" VCP SEWER LINE
 - (M) = MEASURED
 - (R) = RECORD MEASUREMENT
 - ▭ = NEW SIDEWALK

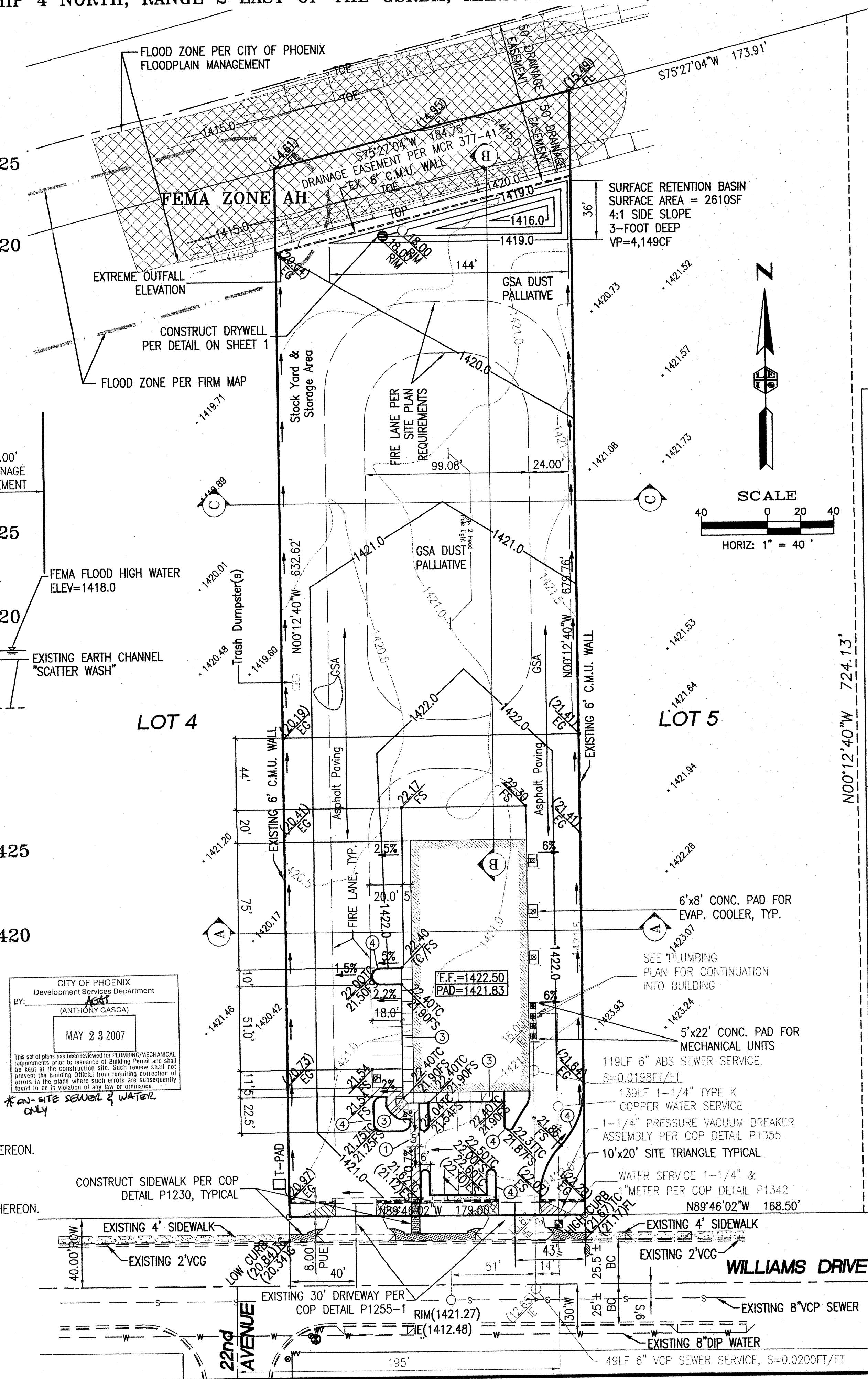


FLOOD ZONE:

COMMUNITY NUMBER	PANEL NUMBER	SUFFIX	DATE OF FIRM	FIRM ZONE	BASE FLOOD ELEVATION
040051	1205	G	SEPT. 39, 2005	AH	1418

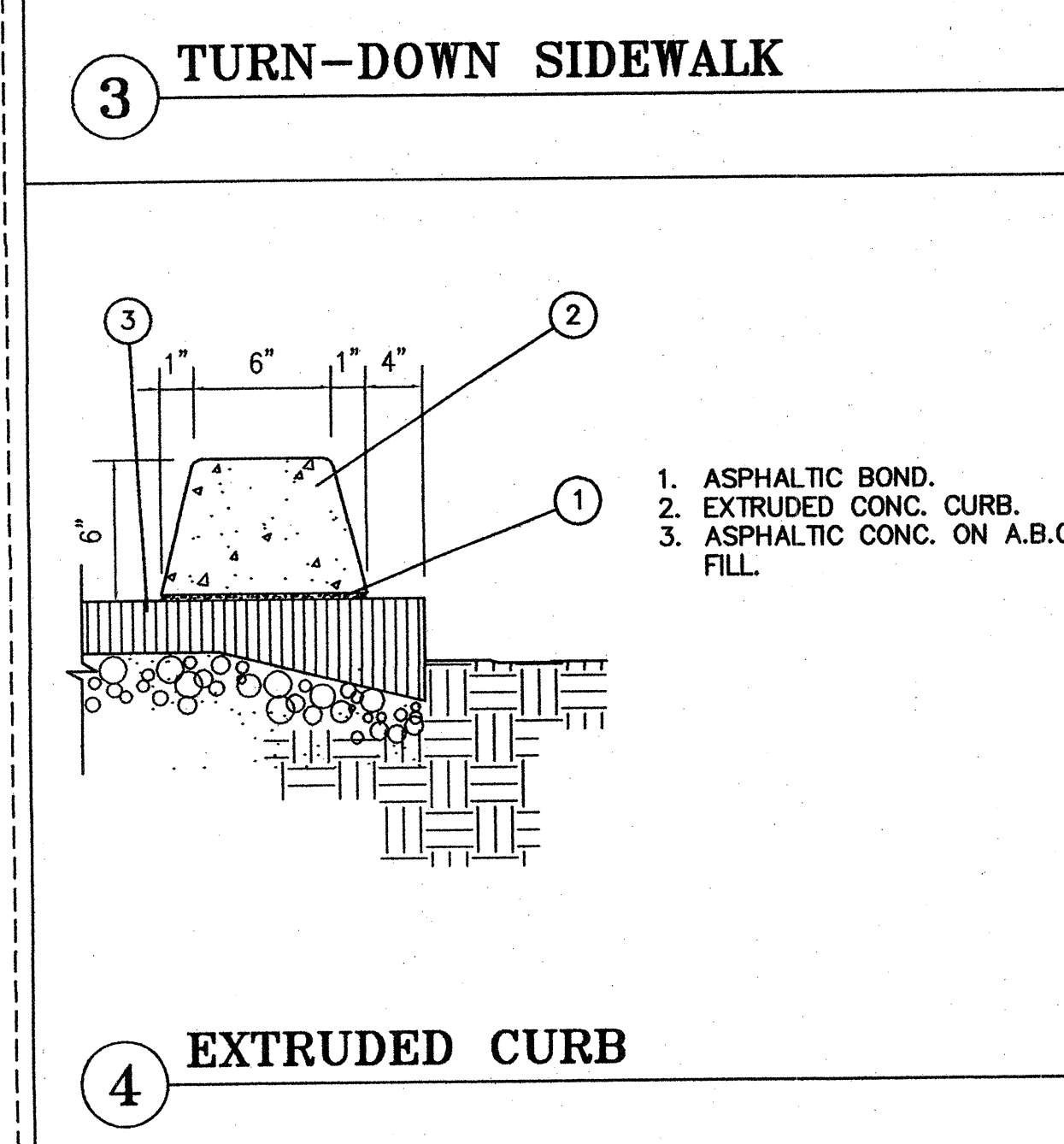
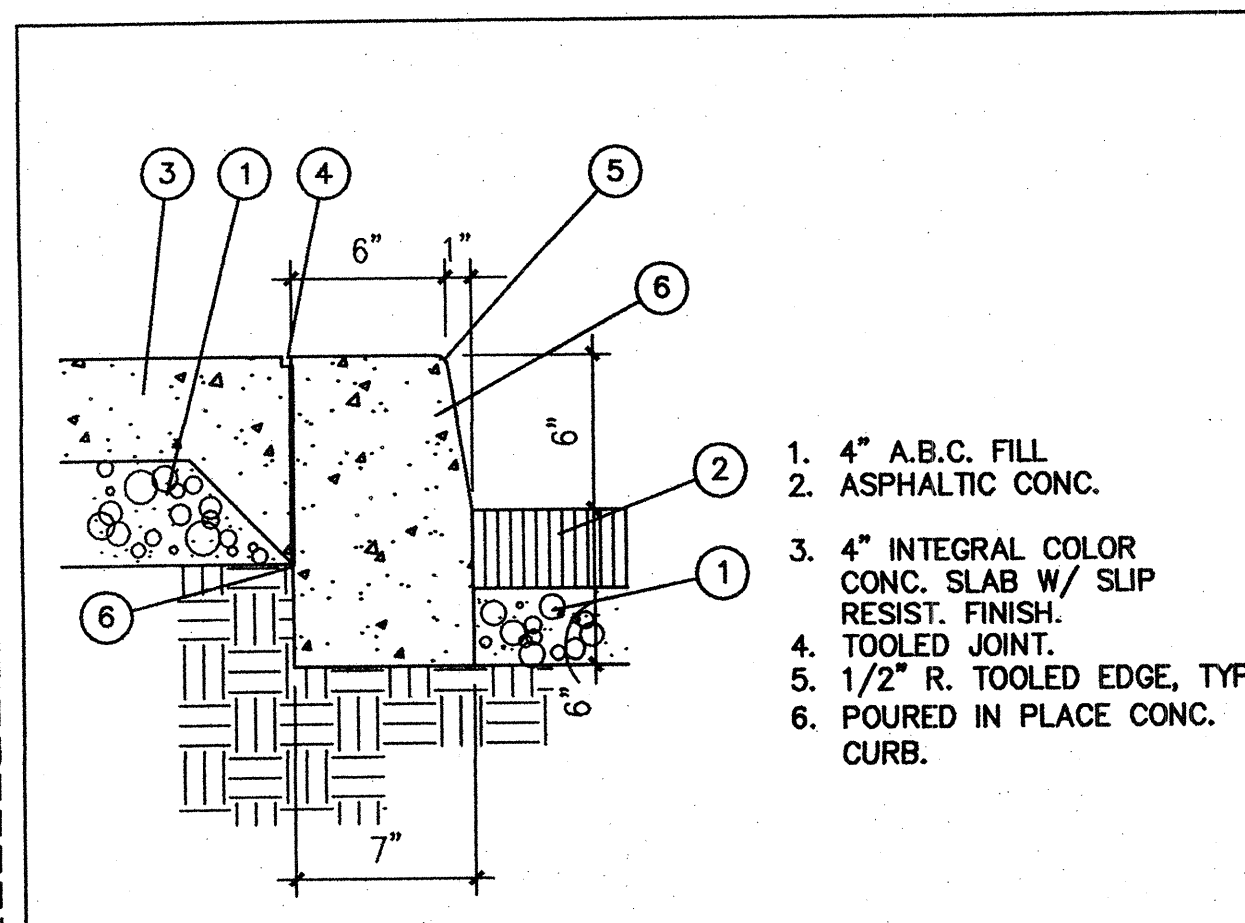
- CONSTRUCTION NOTES:**
1. ADA ACCESSIBLE ROUTE.
 2. CONSTRUCT SIDEWALK RAMP PER DETAIL HEREON.
 3. CONSTRUCT SIDEWALK PER DETAIL HEREON.
 4. CONSTRUCT EXTRUDED CURB PER DETAIL HEREON.

CITY OF PHOENIX
 Development Services Department
 BY: *AG*
 (ANTHONY GASCA)
 MAY 23 2007
 This set of plans has been reviewed for PLUMBING/MECHANICAL requirements prior to issuance of Building Permits and shall be kept at the construction site. Such review shall not prevent the Building Official from requiring correction of errors on the plans where such errors are subsequently found to be in violation of any law or ordinance.
 *on-site sewer & water only



DRYWELL NOTES:
 THE OWNER/DEVELOPER SHALL BE RESPONSIBLE FOR REGISTERING THE DRY WELLS SHOWN ON THE G&D PLAN WITH THE ARIZONA DEPARTMENT OF ENVIRONMENTAL QUALITY (A.D.E.Q.). FOR INFORMATION ABOUT SPECIFIC REQUIREMENTS, CONTACT THE WATER PERMITS UNIT AT (602) 717-4686.
 DRY WELLS MUST BE DRILLED A MINIMUM OF 10 FEET INTO PERMEABLE POROUS STRATA OR PERCOLATION TESTS WILL BE REQUIRED. THE G&D INSPECTOR MUST BE PRESENT BEFORE BACKFILL OR WELL PIPES ARE PLACED WITHIN ANY DRY WELLS.

LOT 1
 OF
 "AHSISAHOALTEEH PROPERTIES"
 BOOK 341 OF MAPS,
 PAGE 35, M.C.R.



WATER, SEWER & FIRE LINES ARE SHOWN FOR REFERENCE ONLY

KIVA #06-4203
 PRE-APP #0604020
 QS # 44-24
 CCPR #0700632

CALL TWO WORKING DAYS BEFORE YOU DIG
 802-283-1100
 1-800-STAKE-IT
 (OUTSIDE MARICOPA COUNTY)