

ARCHITECT'S SUPPLEMENTAL INSTRUCTIONS

ASI 04

Project: Homestead Community Center & Sales Office
Maricopa, AZ.
0428

Date: June 11, 2007

To: DR Horton Homes
Attn: Rick McDowell / Cindy Schropp

Owner: DR Horton Continental Series

Contract For: General Construction

Contract Date:

From: CCBG Architects, Inc.

Copies To:

The Work shall be carried out in accordance with the following supplemental instructions issued in accordance with the Contract Documents. Prior to proceeding in accordance with these instructions, indicate your acceptance of these instructions for minor change to the Work as consistent with the Contract Documents and return a copy to the Architect. If you feel a change in Contract Sum or Contract Time is warranted, please submit an itemized quotation for the changes for approval prior to proceeding on the Work. Please respond within FIVE (5) days of the date of issuance.

Description:

Design of gas, water, sewer, electrical to stacked washer and dryer in Table/Chair Storage Room 108.

Reason:

Missing information. Washer and dryer was shown on sheet A2.1 but never engineered on MPE.

Attachments:


SKM1.0c SKP2.0A SKP3.1A SKP3.2A SKP3.2B SKE2.0a SKE4.1.1c

ISSUED BY:

Rick Serrano

ACCEPTED BY:

Architect:

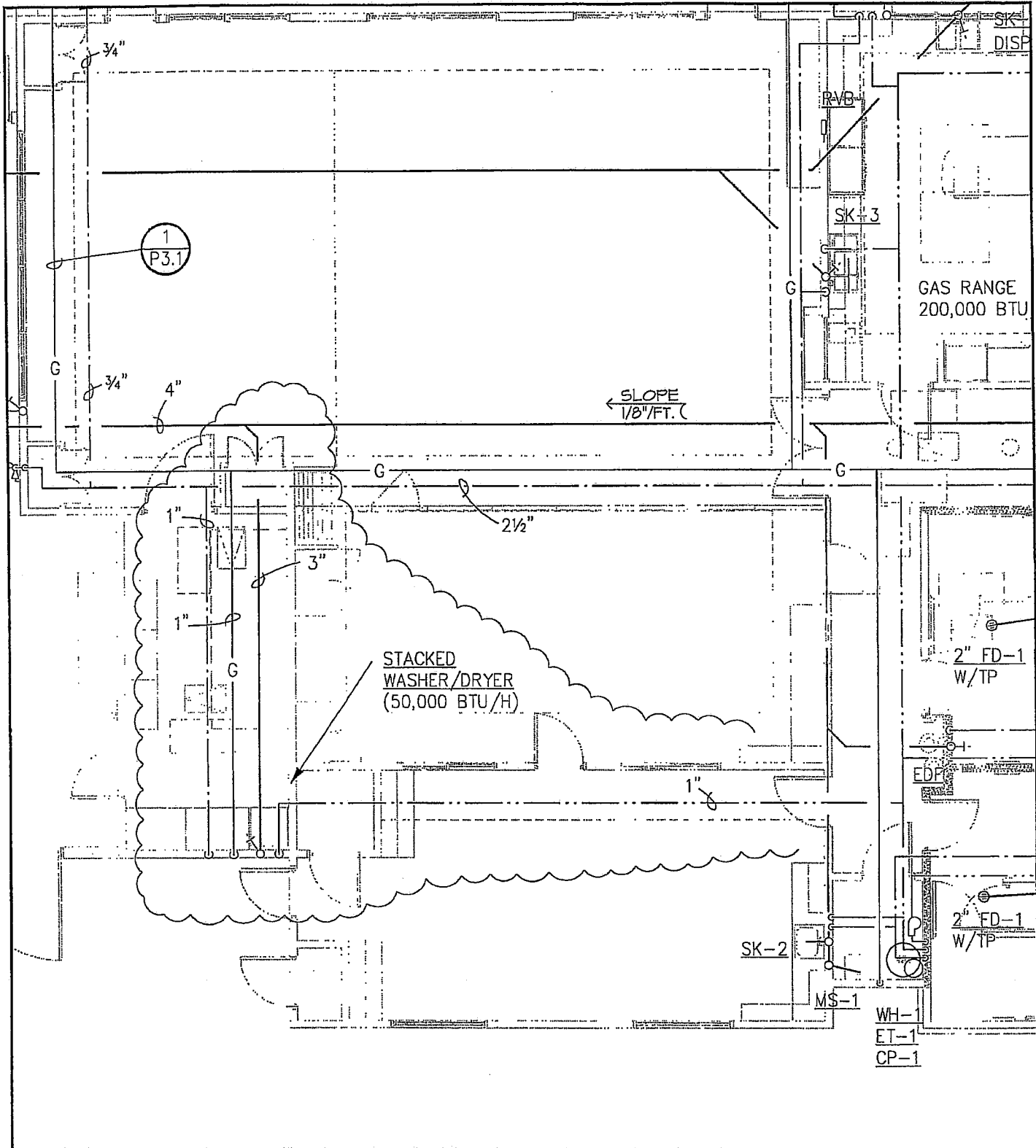

CCBG Architects, Inc.

Contractor:

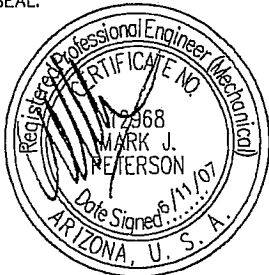
Date:

C C B G Architects, Inc. 102 e. buchanan street phoenix, arizona 85004 602/258-2211, fax 602/255-0909

Date:



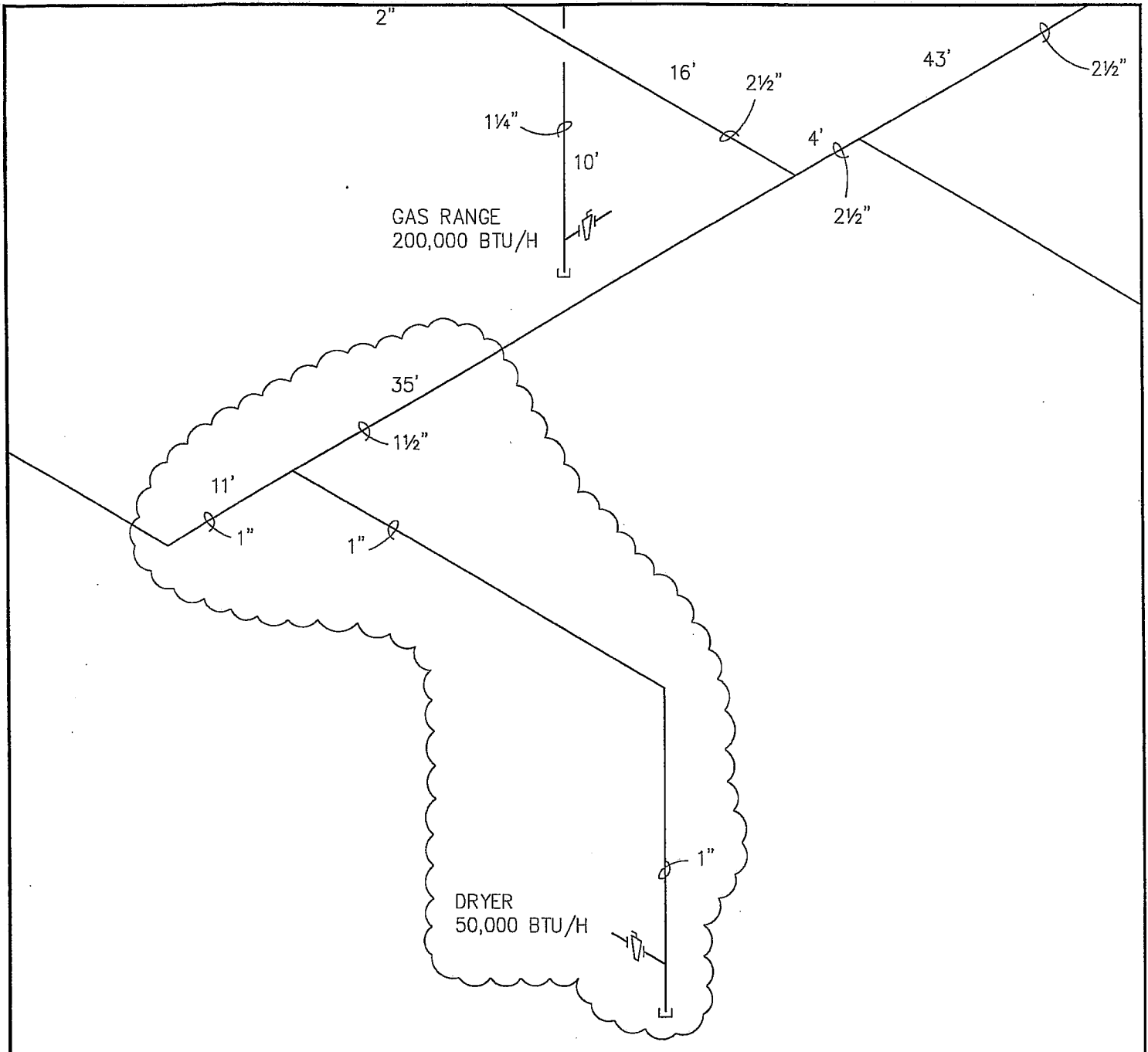
SEAL:



PETERSON ASSOCIATES
 CONSULTING ENGINEERS INC.
 7201 N. Dreamy Draw Drive
 Suite #200
 Phoenix, Arizona 85020
 (602) 943-4116
 Fax (602) 943-2507
 www.mpeconsult.com

PROJECT: HOMESTEAD
 LOCATION: MARICOPA, AZ
 ARCHITECT: CCBG
 DATE: 6-7-07
 DESIGN: MOC
 CHECK: MJP
 JOB NO: 055140

SHEET NO.
SKP2.0A
 OF -



1 GAS PIPING DIAGRAM
P3.1 N.T.S.




PETERSON ASSOCIATES
CONSULTING ENGINEERS INC.
7201 N. Dreamy Draw Drive
Suite #200
Phoenix, Arizona 85020
(602) 943-4116
Fax (602) 943-2507
www.mpeconsult.com

PROJECT: HOMESTEAD

LOCATION: MARICOPA, AZ

ARCHITECT: CCBG

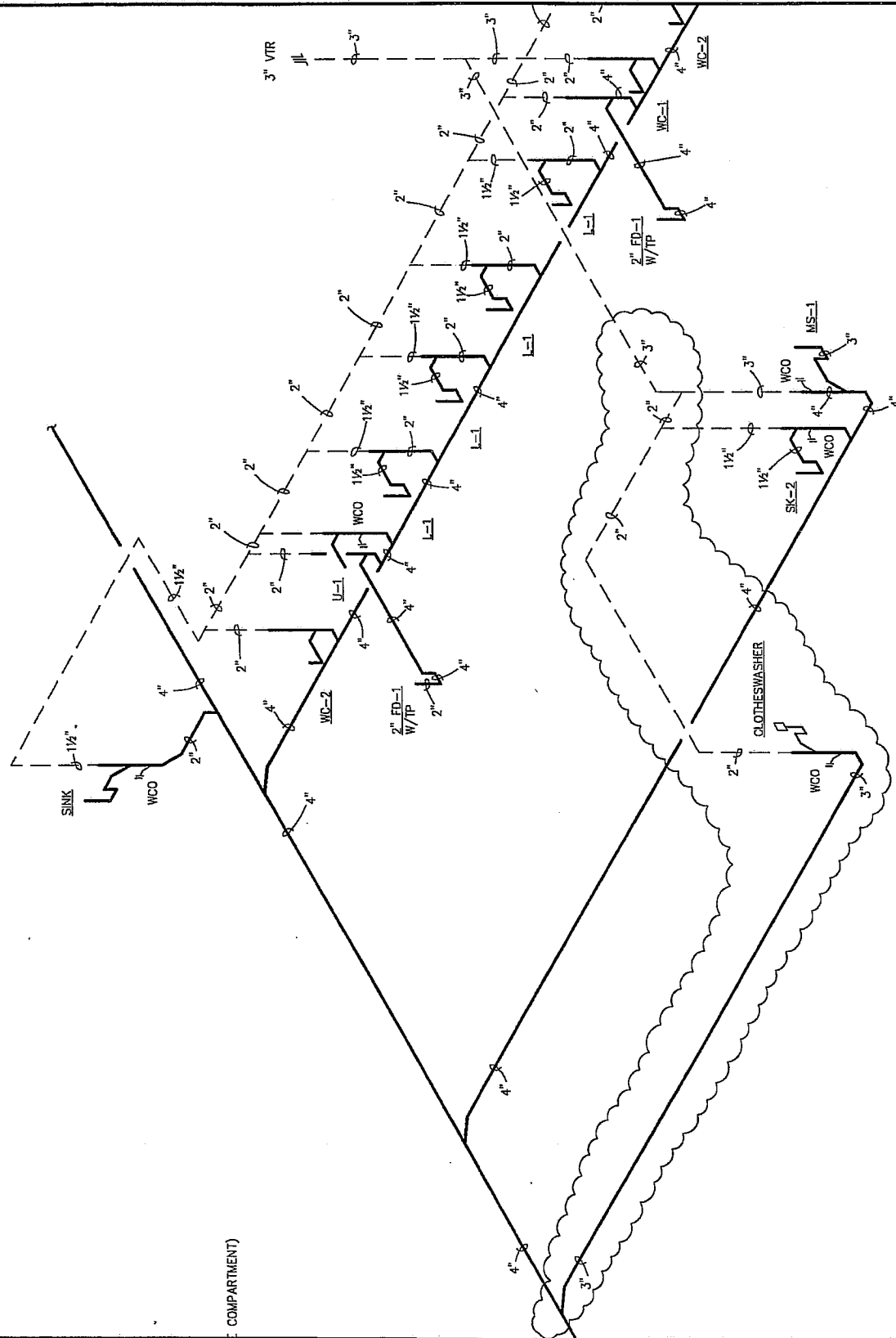
DATE: 6-7-07

DESIGN: MOC

CHECK: MJP

JOB NO: 055140

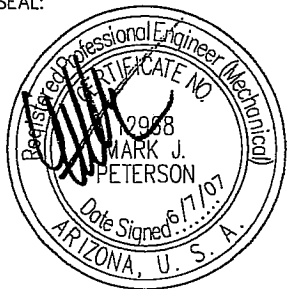
SHEET NO.
SKP3.1A
OF -



WASTE AND VENT DIAGRAM

2
P3.2 N.T.S.

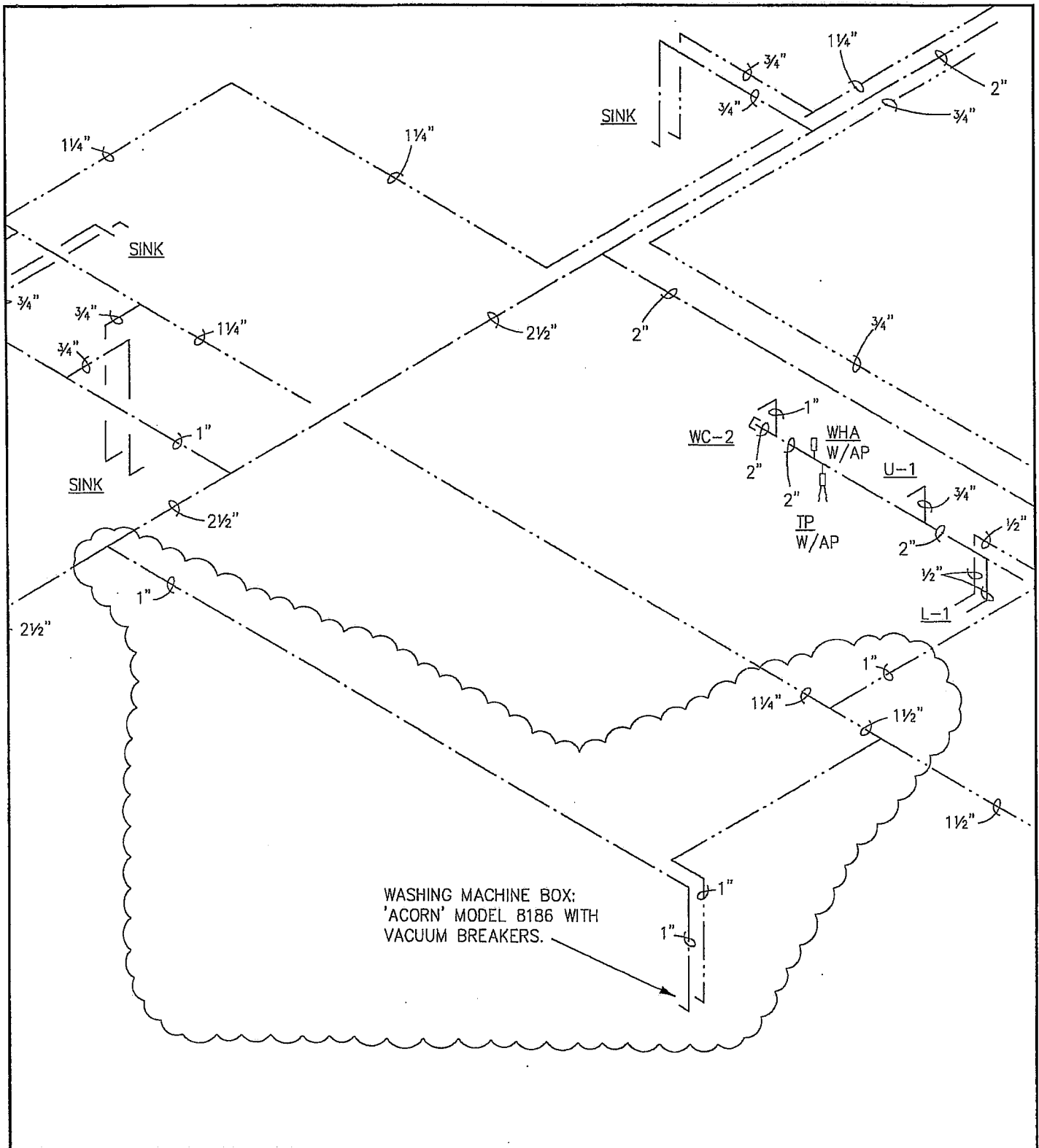
SEAL:



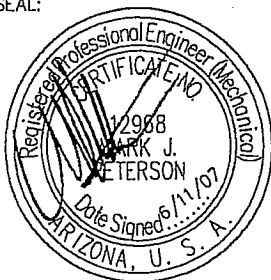
PETERSON ASSOCIATES
 CONSULTING ENGINEERS INC.
 7201 N. Dreamy Draw Drive
 Suite #200
 Phoenix, Arizona 85020
 (602) 943-4116
 Fax (602) 943-2507
 www.mpeconsult.com

PROJECT: HOMESTEAD
 LOCATION: MARICOPA, AZ
 ARCHITECT: CCBG
 DATE: 6-7-07
 DESIGN: MOC
 CHECK: MJP
 JOB NO: 055140

SHEET NO.
SKP3.2A
 OF -



SEAL:



PETERSON ASSOCIATES
 CONSULTING ENGINEERS INC.
 7201 N. Dreamy Draw Drive
 Suite #200
 Phoenix, Arizona 85020
 (602) 943-4116
 Fax (602) 943-2507
 www.mpeconsult.com

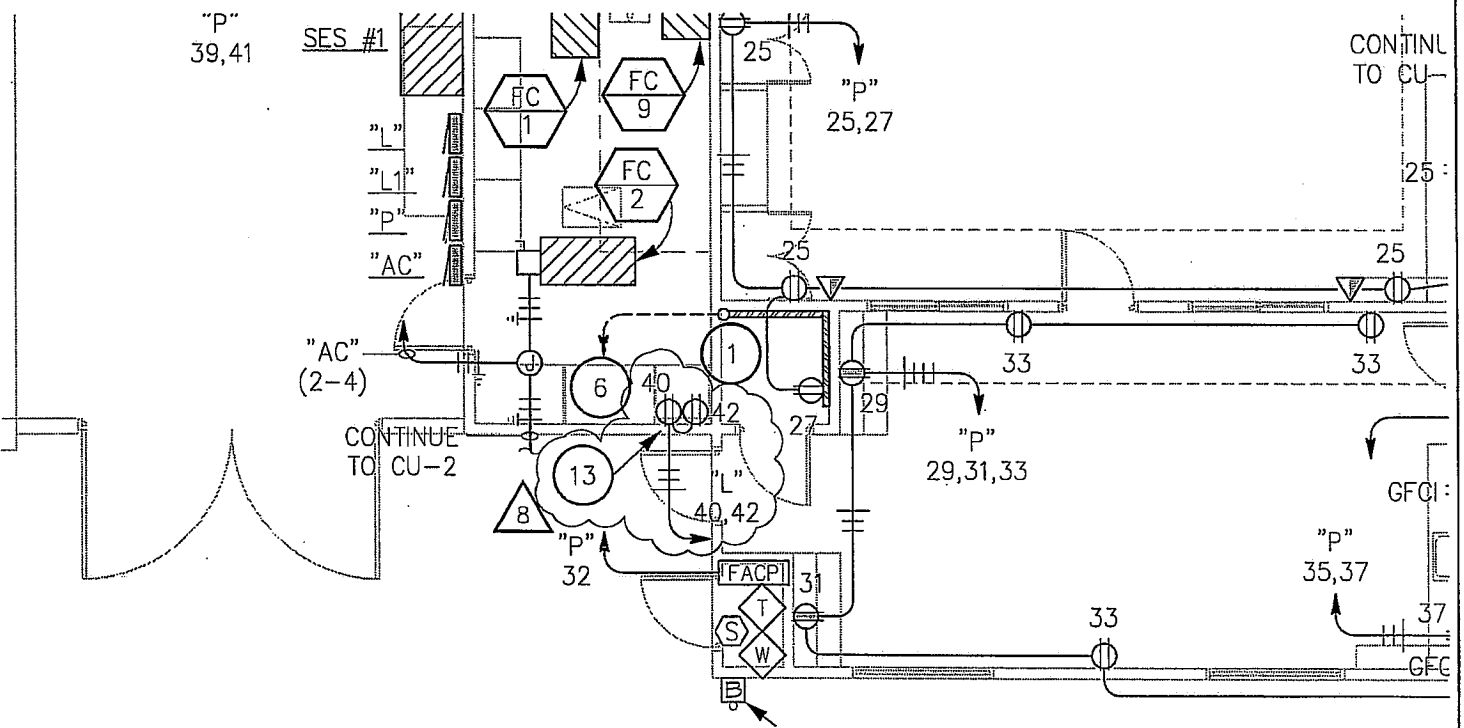
PROJECT: HOMESTEAD
 LOCATION: MARICOPA, AZ
 ARCHITECT: CCBG
 DATE: 6-7-07
 DESIGN: MOC
 CHECK: MJP
 JOB NO: 055140

SHEET NO.
SKP3.2B
 OF -

- 6. (1) 3"C. WITH PULL WIRE TO TMB IN SALES OFFICE
- 7. MICROWAVE
- 8. FREEZER
- 9. GAS COOKTOP
- 10. MICROWAVE/WARMING DRAWER
- 11. ICE MAKER
- 11. (2) #12, (1) #12 GRD, 1/2"C. FOR INTERCOOKING WITH EF-10
- 12. J-BOX FOR ANSUL SYSTEM

13. (2) DUPLEX RECEPTACLES FOR STACKABLE WASHER/GAS DRYER.

8



8 6-05-07 WASHER/DRYER

SEAL:

Professional Engineer (Electrical)
 REGISTERED PROFESSIONAL ENGINEER LICENSE NO. 27956
 WILLIAM M. CHASE, JR.
 Date Signed 6/14/07
 ARIZONA, U. S. A.

PETERSON ASSOCIATES
 CONSULTING ENGINEERS INC.
 7201 N. Dreamy Draw Drive
 Suite #200
 Phoenix, Arizona 85020
 (602) 943-4116
 Fax (602) 943-2507
 www.mpeconsult.com

PROJECT: HOMESTEAD COMMUNITY CENTER & SALES OFFICE
 LOCATION: CITY OF MARICOPA
 ARCHITECT: CCBG ARCHITECTS, INC.
 DATE: 6-05-07
 DESIGN: RG
 CHECK: WMC
 JOB NO: 055140

SHEET NO.
 SKE2.0a
 OF -

PANELBOARD SCHEDULE

” ”
(NEW)

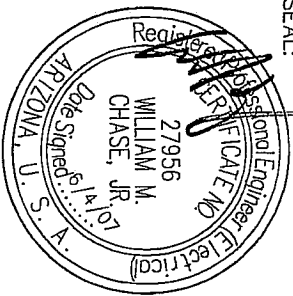
ISOLATED GROUND BUS: YES NO
CABINET: NEMA 3R

TYPE: BOLT-ON MOUNTING: SURFACE VOLTAGE: 120/208V, 3Ø, 4W BRACING: 65/10 S.R. MAINS: 225A M.L.O.

USE AND/OR AREA SERVED	C/B	CIR NO.	VOLT - AMPERES			CIR NO.	C/B	USE AND/OR AREA SERVED
			AØ	BØ	CØ			
USE AND/OR AREA SERVED	20	1	650			20	1	USE AND/OR AREA SERVED
LTS - SERVICE YARD	20	1	1150			20	1	LTS - FITNESS
LTS - CONF, CRAFT	20	3	1506			20	1	LTS - GREAT ROOM
LTS - OFFICE, RECEPTION	20	5	963			20	1	LTS - KITCHEN
LTS - HALL	20	7	1150			20	1	LTS - CONF-3
LTS - LOUNGE	20	9	1712			20	1	LTS - EXTERIOR
LTS - GAME ROOM	20	11	600			20	1	LTS - EXTERIOR
LTS - RESTROOM	20	13	1225			20	1	LTS - EXTERIOR
CONTROL CIRCUIT	20	15	1000	180	1500	20	1	CEILING FANS
FUTURE SIGN	20	17	1500	1500	1000	20	1	CEILING FANS
FUTURE SIGN	20	19	1500	1500	1500	20	1	CEILING FANS
FUTURE SIGN	20	21	1000	1500	1000	20	1	CEILING FANS
FUTURE SIGN	20	23	1000	1500	1500	20	1	CEILING FANS
REC - FITNESS	20	25				24	1	SPACE
SPARE	20	27	875	625		20	1	LTS - EXTERIOR
LTS - SITE	20	29	1300	1300		20	1	LTS - LANDSCAPE
LTS - SITE	20	31	550	1094	1300	20	1	LTS - LANDSCAPE
LTS - SITE (NL)	20	33	500	550	500	20	1	REC - BRQ
LTS - SITE	20	35	825	825	600	20	1	REC - BRQ
LTS - SITE	20	37	825	825	600	20	1	CEILING FAN
LTS - SITE	20	39	963	963	500	20	1	SPACE
LTS - SITE	20	41	1300	1300	500	20	1	REC - WASHER
LTS - SITE	20	42	500	500	500	20	1	REC - GAS DRYER
TOTAL LOAD PER PHASE			10762	11887	11101			11887 VA / 120 V = 99.1 AMPS

8 6-05-07 WASHER/DRYER

SEAL:



PETERSON ASSOCIATES
CONSULTING ENGINEERS INC.
7201 N. Dreamy Draw Drive
Suite #200
Phoenix, Arizona 85020
(602) 943-4116
Fax (602) 943-2507
www.mpeconsult.com

PROJECT: HOMESTEAD COMMUNITY CENTER & SALES OFFICE
LOCATION: CITY OF MARICOPA
ARCHITECT: CCBG ARCHITECTS, INC.
DATE: 6-05-07
DESIGN: RG
CHECK: WMC
JOB NO: 055140

SHEET NO.
SKE4.1.1c
OF -