

ARCHITECT'S SUPPLEMENTAL INSTRUCTIONS

ASI 03

Project: Homestead Community Center & Sales Office
0428
Date: May 10, 2007
To: _____
Owner: DR Horton Continental Series
Contract For: General Construction
Contract Date: _____
From: CCBG Architects, Inc.
Copies To: John Lockett

The Work shall be carried out in accordance with the following supplemental instructions issued in accordance with the Contract Documents. Prior to proceeding in accordance with these instructions, indicate your acceptance of these instructions for minor change to the Work as consistent with the Contract Documents and return a copy to the Architect. If you feel a change in Contract Sum or Contract Time is warranted, please submit an itemized quotation for the changes for approval prior to proceeding on the Work. Please respond within FIVE (5) days of the date of issuance.

Description:

1. Clarification of dimensions and head configuration at interior openings of Sales Office.
2. Extend wall at mechanical equipment on west side of Community Center.

Reason:

Missing information.

Attachments:

SK 04
SK 05

ISSUED BY: Rick Serrano

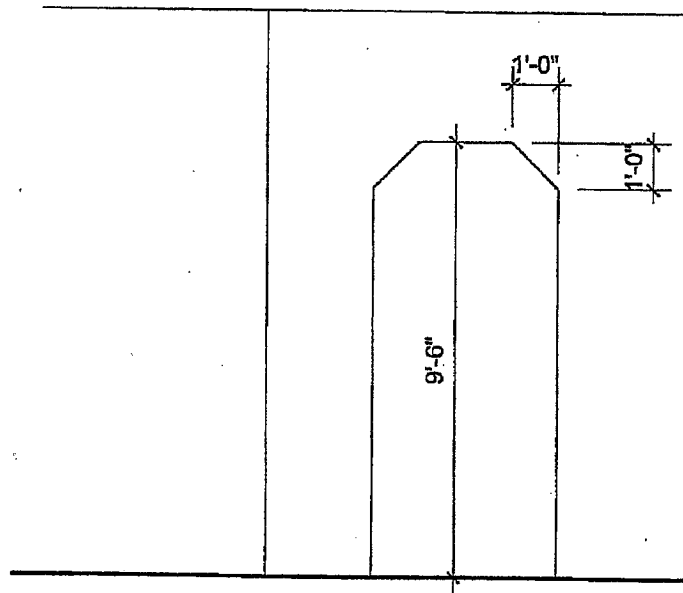
ACCEPTED BY: _____

Architect: CCBG Architects, Inc.

Contractor: _____

Date: 5/18/07

Date: _____



LOBBY 100 OPENINGS

1/4" = 1'-0"

INTERIOR OPENINGS AT LOBBY 100 OF SALES OFFICE SHALL RECEIVE
CHAMFERED HEAD 12" x 12".

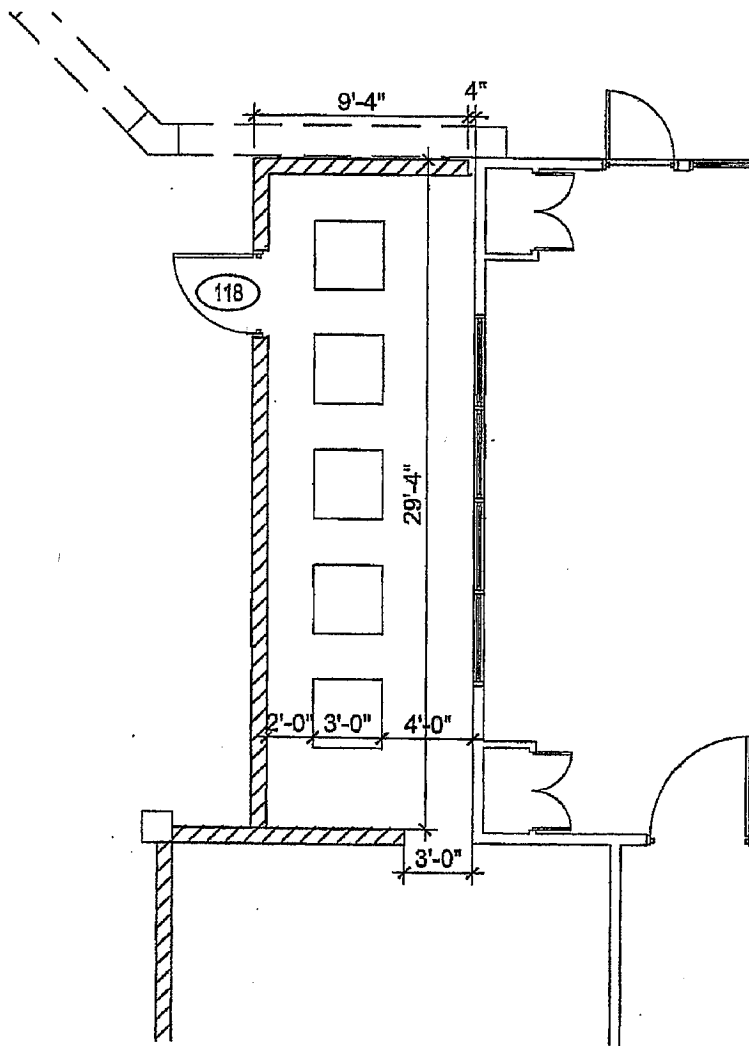
ASI 03

HOMESTEAD SALES OFFICE

DATE	REV	FOR
MAY 3, 2007		

CCBG ARCHITECTS, INC.

SK 04



AT COMMUNITY CENTER, EXTEND MASONRY SCREEN WALL NORTH TO INCLUDE 5 A/C UNITS INSTEAD OF 4.

RELOCATE GATE 118 TO WEST SIDE WALL.

ASI 03

HOMESTEAD COMMUNITY CENTER

DATE	REV	FOR
MAY 3, 2007		

CCBG ARCHITECTS, INC.

SK 05