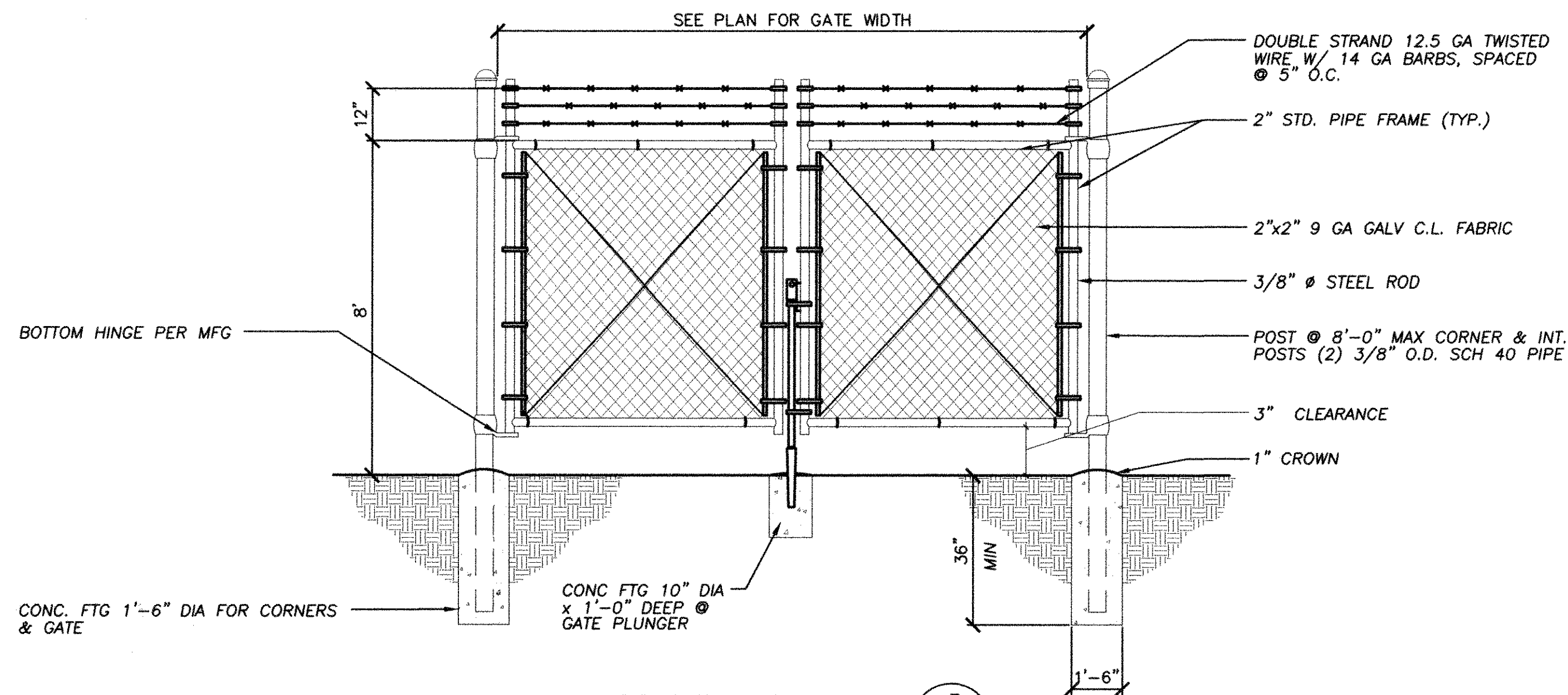
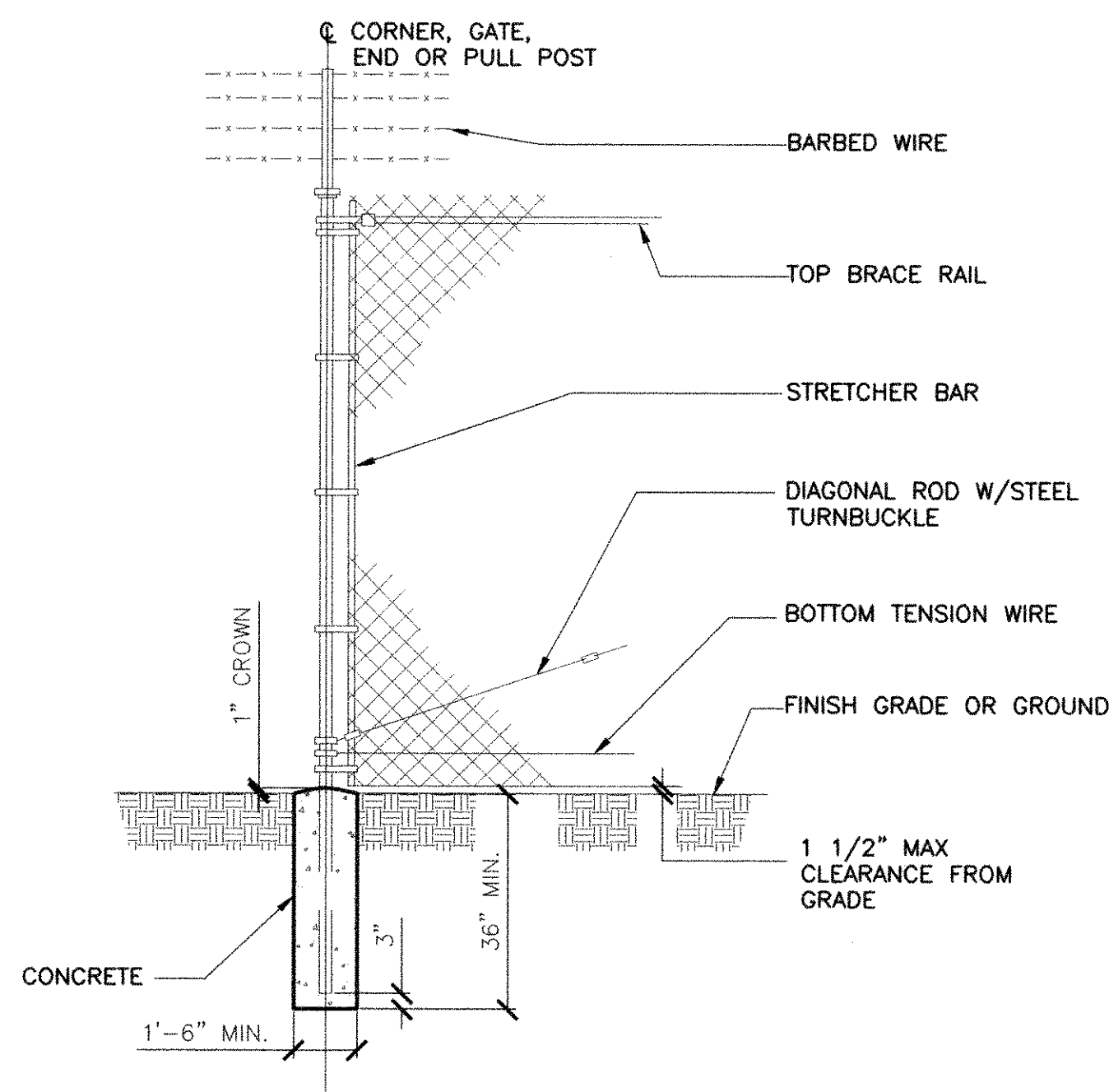


TYPICAL SECTION WOVEN WIRE FENCE (1)
N.T.S.

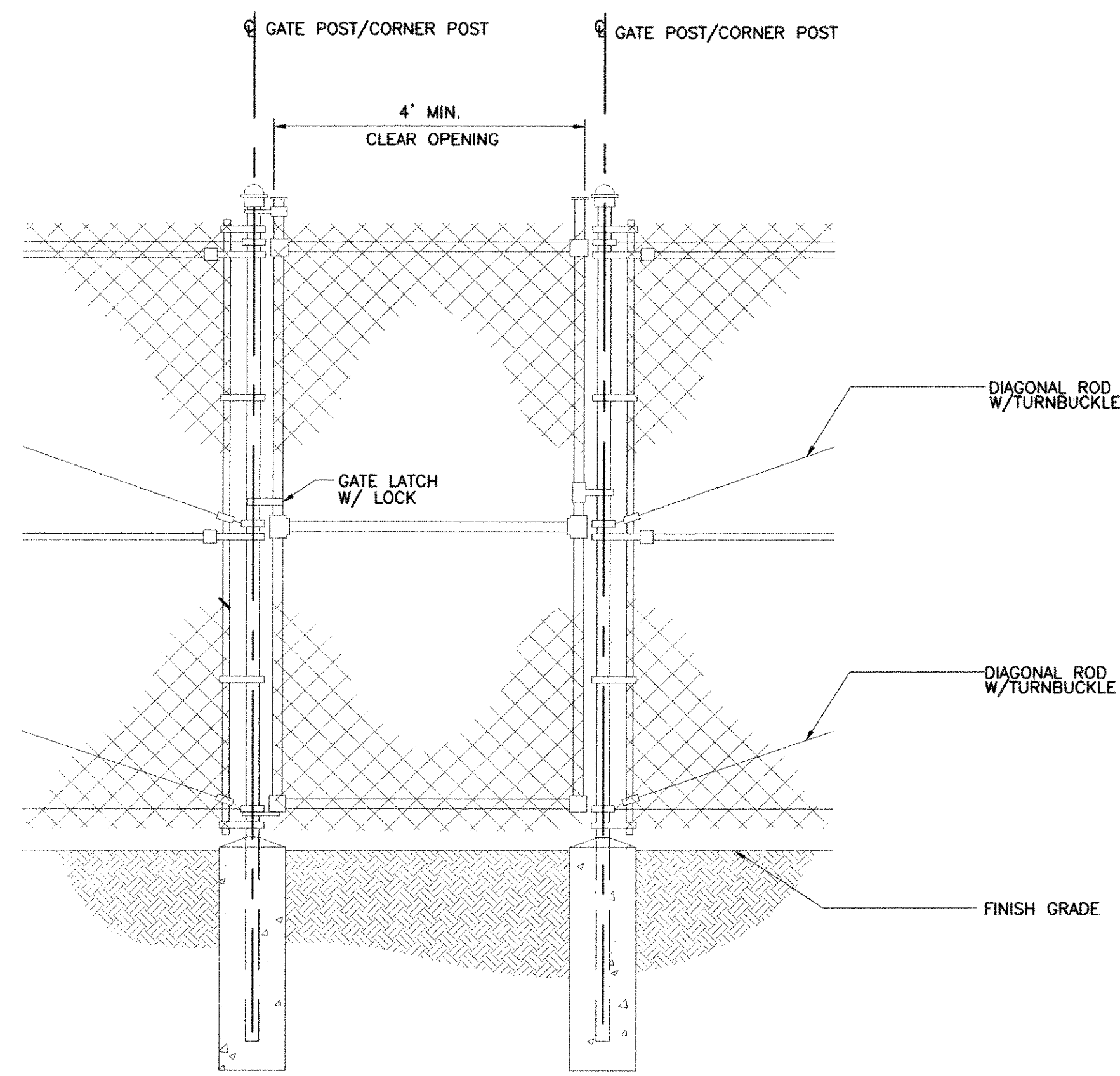


DOUBLE GATES DETAIL (3)
N.T.S.

- NOTES:
(INSTALL FENCING PER ASTM F-567, SWING GATES PER ASTM F-900)
- GATE POST, CORNER, TERMINAL OR PULL POST SHALL BE 2" STD. PIPE SCHEDULE 40 FOR GATE WIDTHS UP THROUGH 6 FEET OR 12 FEET FOR DOUBLE SWING GATE PER ASTM-F1083.
 - LINE POST: 2" STD. PIPE SCHEDULE 40 PIPE PER ASTM-F1083.
 - GATE FRAME: 1 1/2" Ø SCHEDULE 40 PIPE PER ASTM-F1083.
 - TOP RAIL & BRACE RAIL: 1 1/4" Ø SCHEDULE 40 PIPE PER ASTM-F1083.
 - FABRIC: 9 GA. CORE WIRE SIZE 2" MESH, CONFORMING TO ASTM-A392 CLASS 1.
 - TIE WIRE: MINIMUM 11 GA GALVANIZED STEEL INSTALL A SINGLE WRAP TIE WIRE AT POSTS AND RAILS AT MAX. 24" INTERVALS. INSTALL HOG RINGS ON TENSION WIRE AT 24" INTERVALS.
 - TENSION WIRE: 7 GA. GALVANIZED STEEL.
 - BARBED WIRE: 3 STRANDS OF DOUBLE STRANDED 12-1/2 GAUGE TWISTED WIRE, 4 PT. BARBS SPACED ON APPROXIMATELY 5" CENTERS
 - GATE LATCH: 1-3/8" O.D. PLUNGER ROD W/ MUSHROOM TYPE CATCH AND LOCK (KEYED ALIKE FOR ALL SITES OR COMBINATION AS SPECIFIED BY THE CITY OF MESA).
 - LOCAL ORDINANCE FOR BARBED WIRE PERMIT SHALL GOVERN INSTALLATION.
 - HEIGHT = 8' VERTICAL + 1' BARBED WIRE VERTICAL DIMENSION.
 - ALL WORK SHALL CONFORM WITH THE PROJECT SPECIFICATIONS.



WOVEN WIRE CORNER, GATE, END OR PULL POST (2)
N.T.S.



GATE DETAIL (4)
N.T.S.

<p>2151 EAST BROADWAY ROAD, SUITE 217, TEMPE, AZ 85282 VOICE: 480.905.8689 FAX: 480.905.8818</p>	<p>CITY OF MESA ENGINEERING DIVISION</p> <p>THOMPSON PEAK COMMUNICATION TOWER</p>	DRAWING 13
<p>CALL FOR WORKING DAYS OR 811 INSDC MARICOPA COUNTY</p>	<p>41949 SANDEEP ANAND MANE AZ 508 ARIZONA U.S.A. EXPIRES 3/31/11</p>	<p>DRAWN BY: BGH ENGINEER: SAM APPROVED BY: F RUSTAM</p>
<p>340 W.O. 4399 PROJ. NO. 02-410-001</p>	<p>13 OF 33</p>	<p>CATALOG NUMBER: A-139268</p>