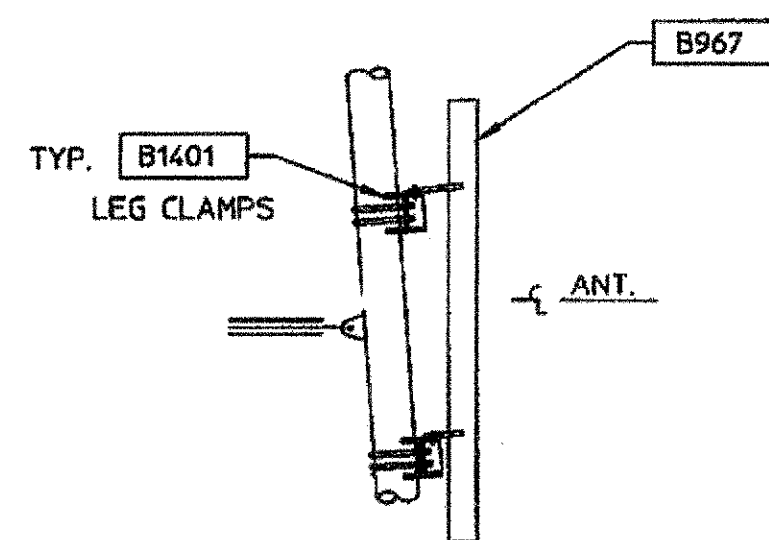
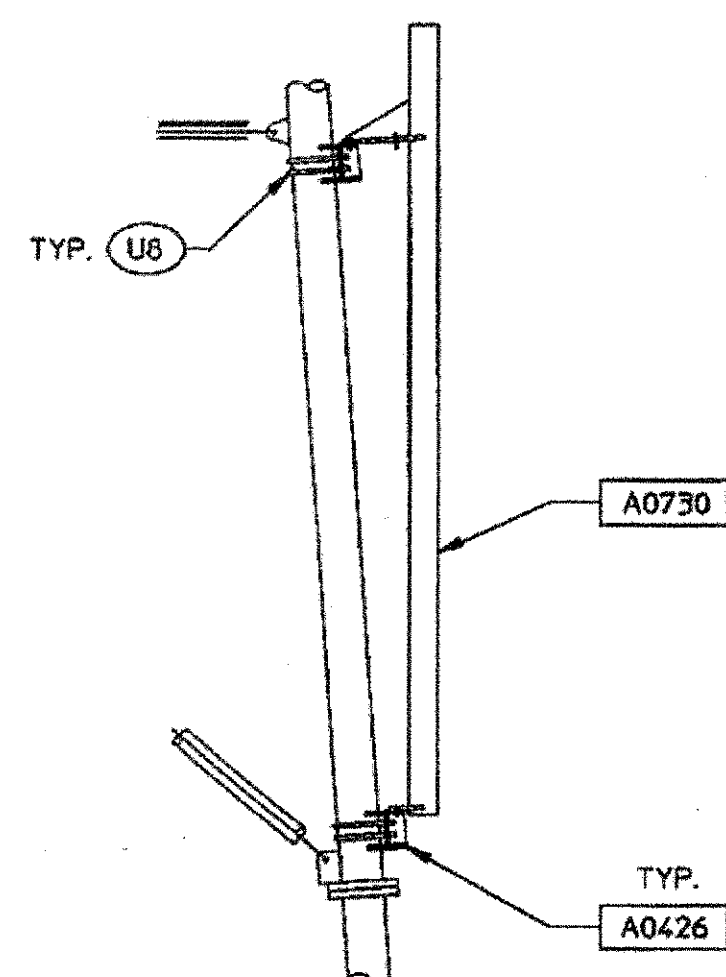
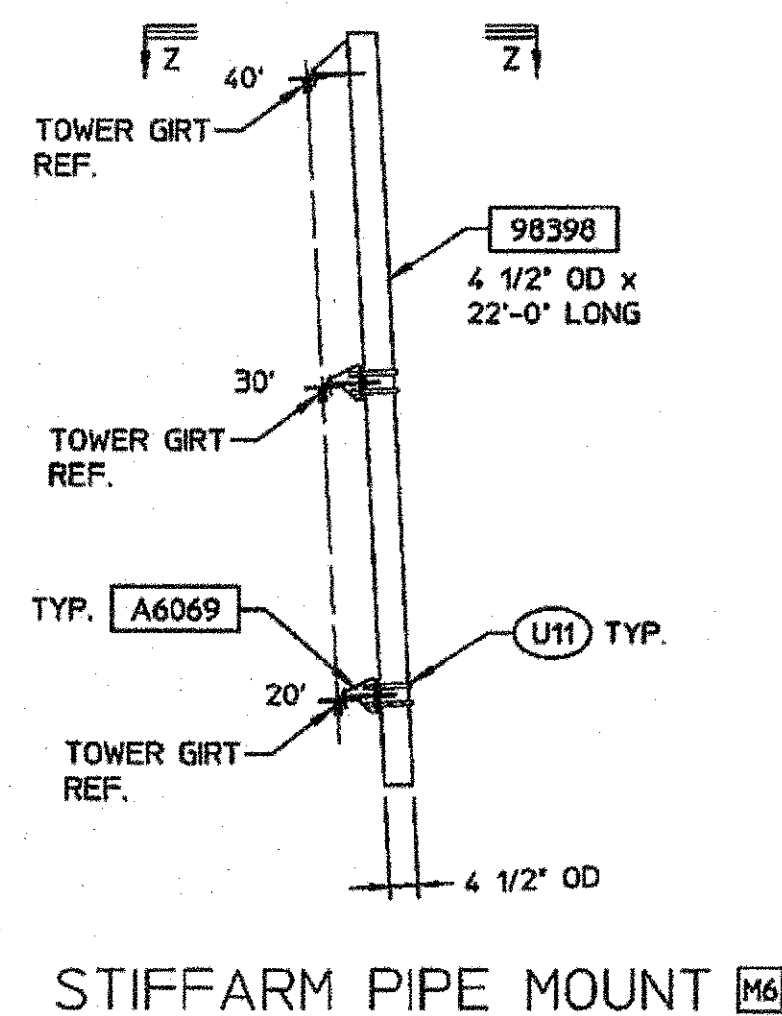
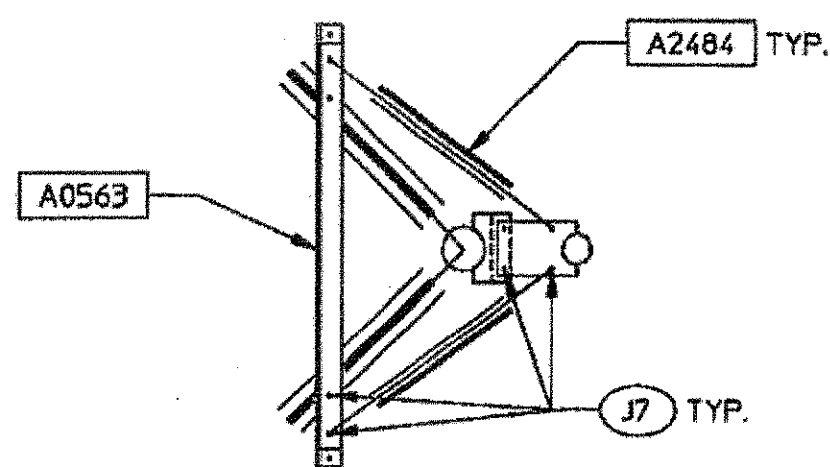
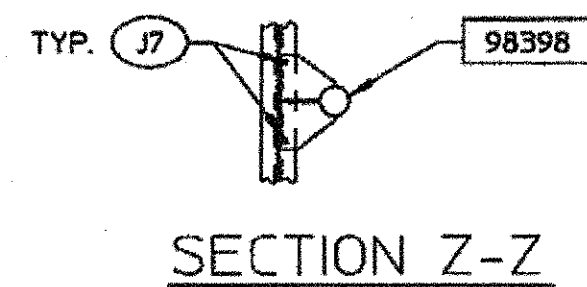


PARTS LIST			
DESIG	MARK	DESCRIPTION	QTY
M1	A0940	PIPE MOUNT PLATE WELDMENT	4
	A0941	PLATE WELDMENT	4
M2	100242	ARB PIPE MOUNT PLATE WELDMENT	11
	A6069	PLATE WELDMENT	11
M3	B996	ARB CHANNEL	15
M4	A0174	PIPE MOUNT SUPPORT ANGLE	2
	A0563	SUPPORT ANGLE	2
	A2483	KICKER ANGLE	4
	A0425	WIDE FLANGE	4
M6	98398	ARB PIPE MOUNT PLATE WELDMENT	1
	A6069	PLATE WELDMENT	2
M7	A0730	PIPE MOUNT SUPPORT ANGLE	2
	A0563	SUPPORT ANGLE	2
	A2484	KICKER ANGLE	4
	A0426	WIDE FLANGE	4
M8	B967	PIPE MOUNT LEG CLAMP KIT	3
	B1401	LEG CLAMP KIT	3



HARDWARE LIST			
SYM	QTY	DESCRIPTION	
J7	106	5/8" x 1 3/4" G5 BOLT, NUT & L.W.	
U7	8	5/8" x 8 3/4" x 12" U-BOLT ASSEMBLY	
U8	8	5/8" x 10 7/8" x 14" U-BOLT ASSEMBLY	
U11	34	5/8" x 4 5/8" x 7" U-BOLT ASSEMBLY	

PIPE MOUNT INSTALLATION M7
BAYS 'F' THRU 'Z' (LOWER W/ SAME O.D. LEG)
10 3/4" O.D. LEG

RELEASED DRAWING TO THE SHOP	DATE	BY/CK	ANTENNA PIPE MOUNTS ARIZONA DEPT OF PUBLIC SAFETY SITE: THOMPSON PEAK, AZ
DESCRIPTION	DATE	BY/CK	valmont STRUCTURES 1-877-467-4763 Plymouth, IN 1-800-547-2151 Salem, OR
REV	DATE	BY/CK	D-125352-6
	13JUN08		
	S.O.	11841-08	SHEET: 6 OF 6