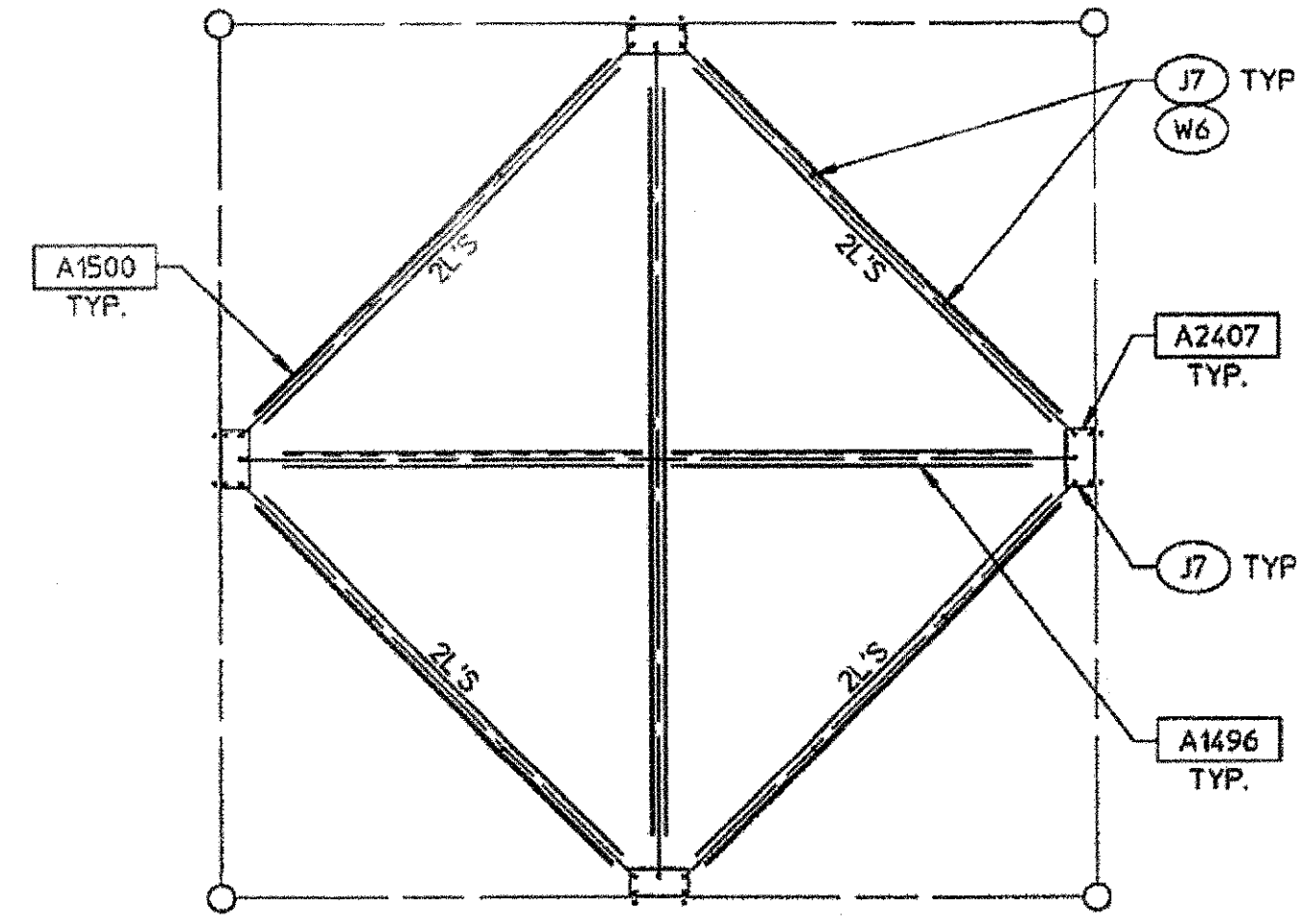
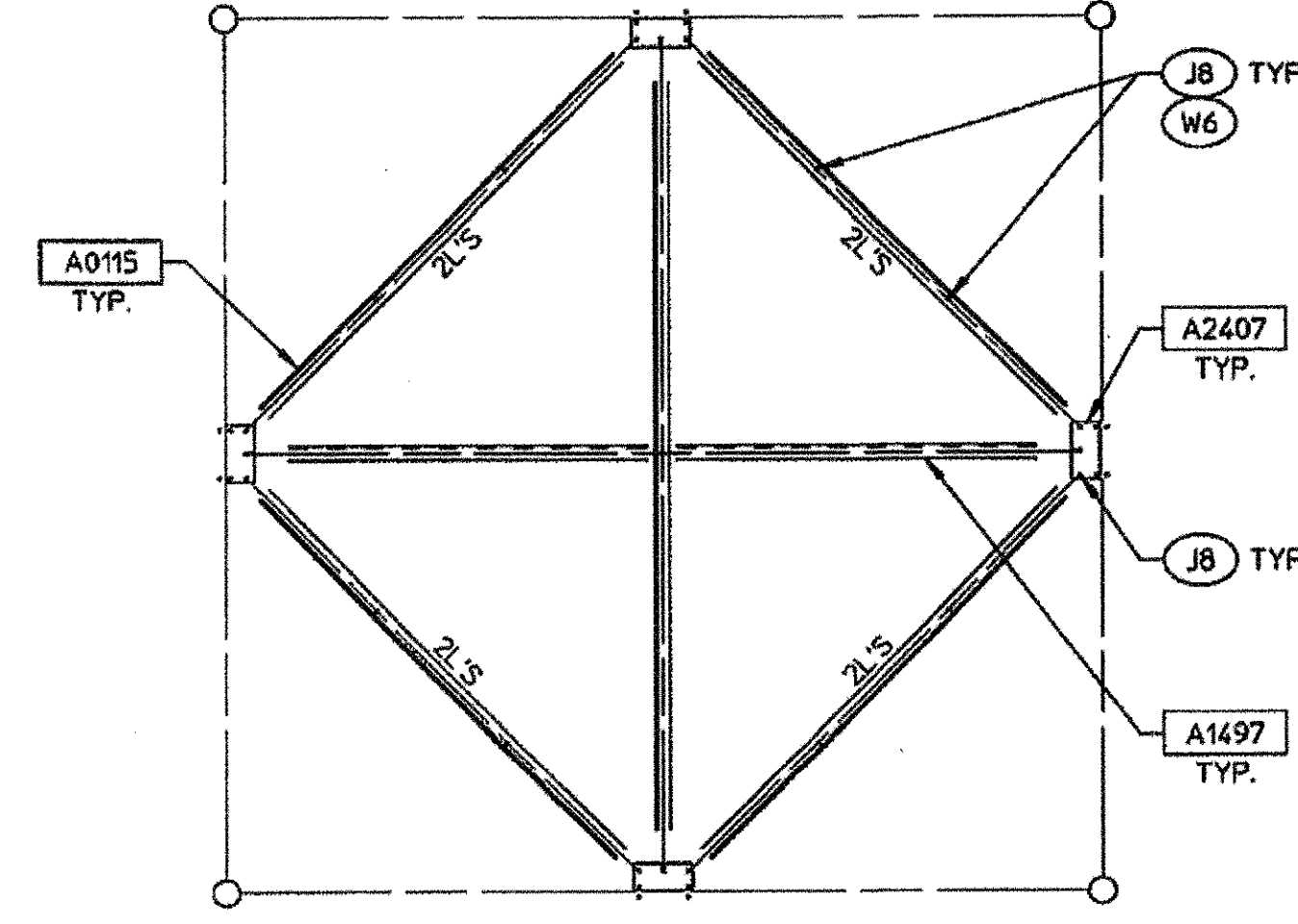


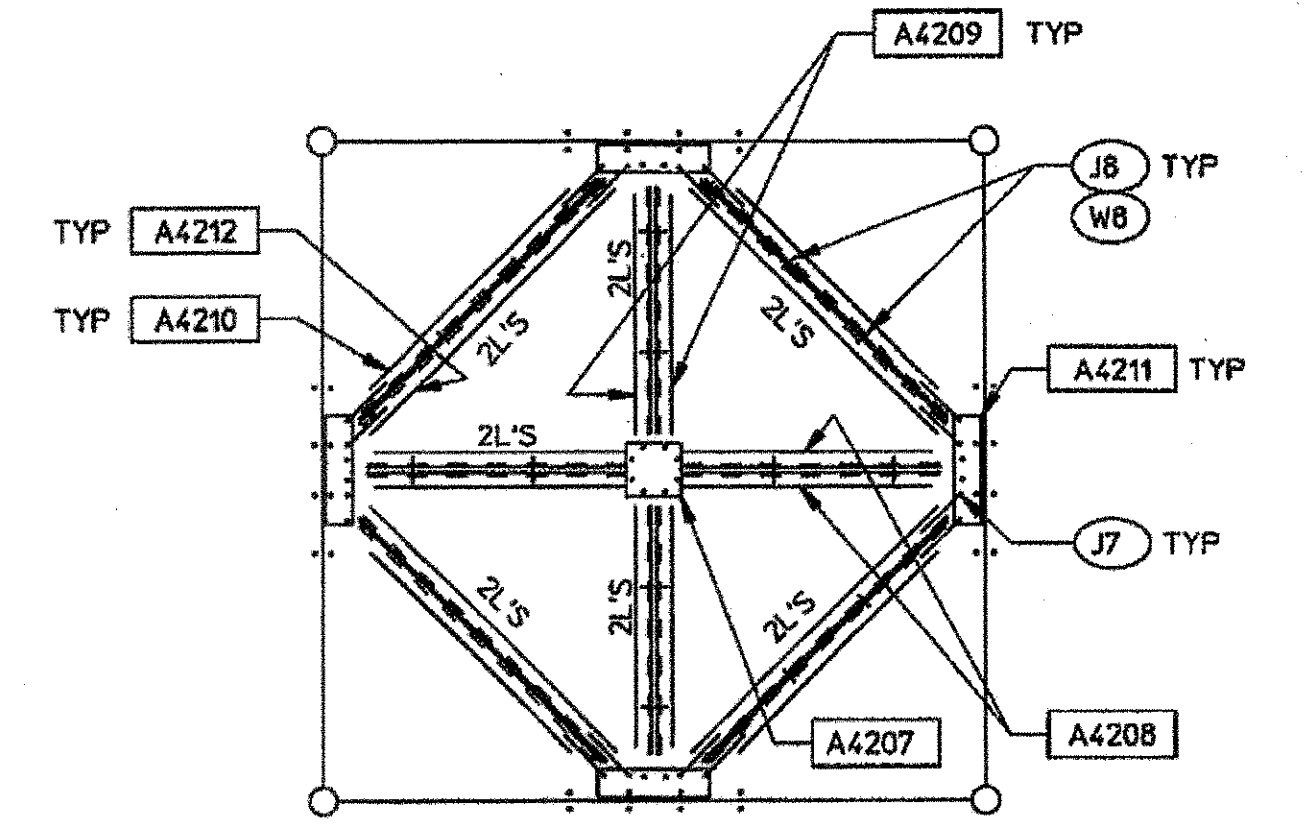
INTERNAL BRACE DETAIL 5
IG1 1/4"=1'-0"



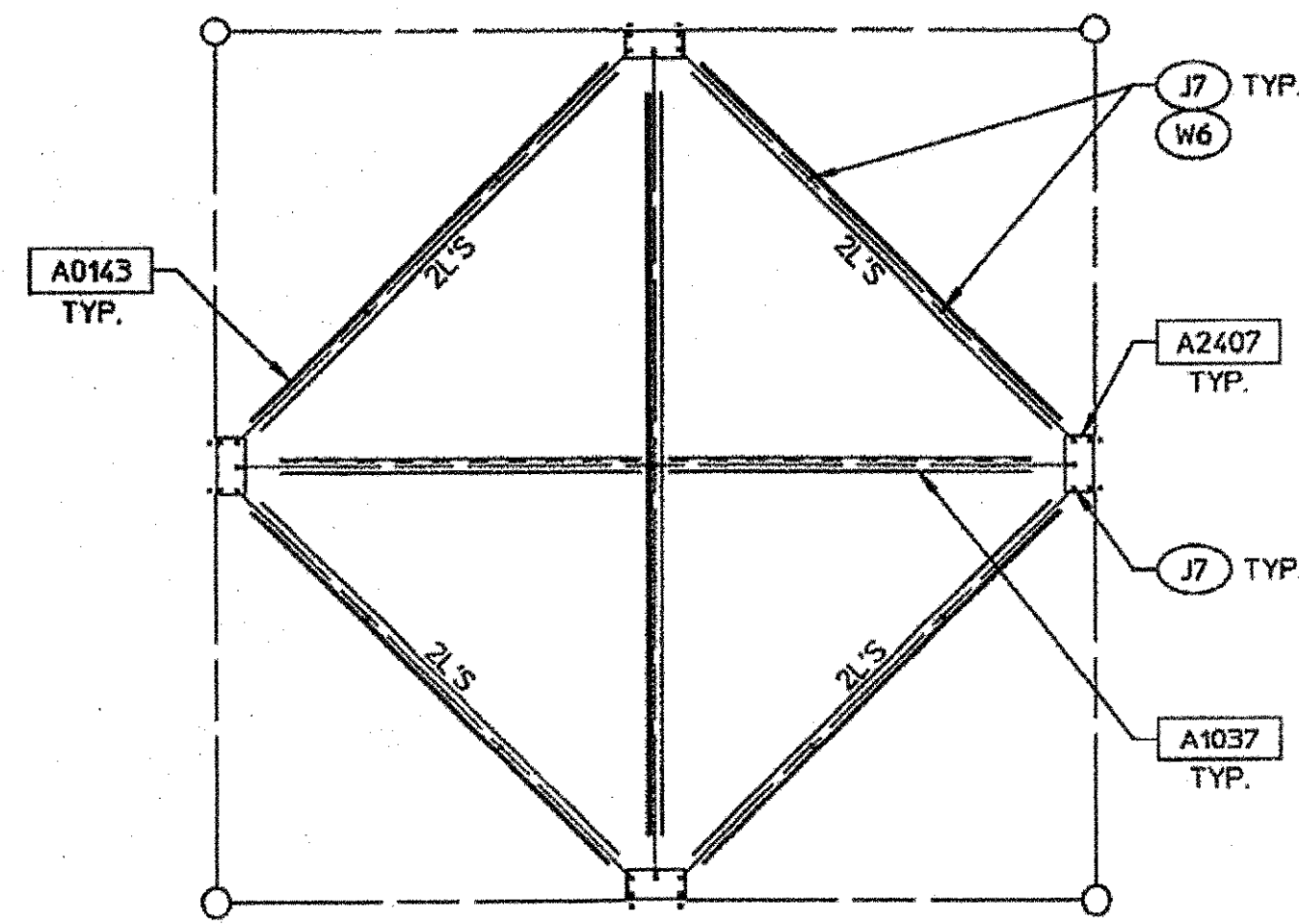
INTERNAL BRACE DETAIL 8
KG2 NTS



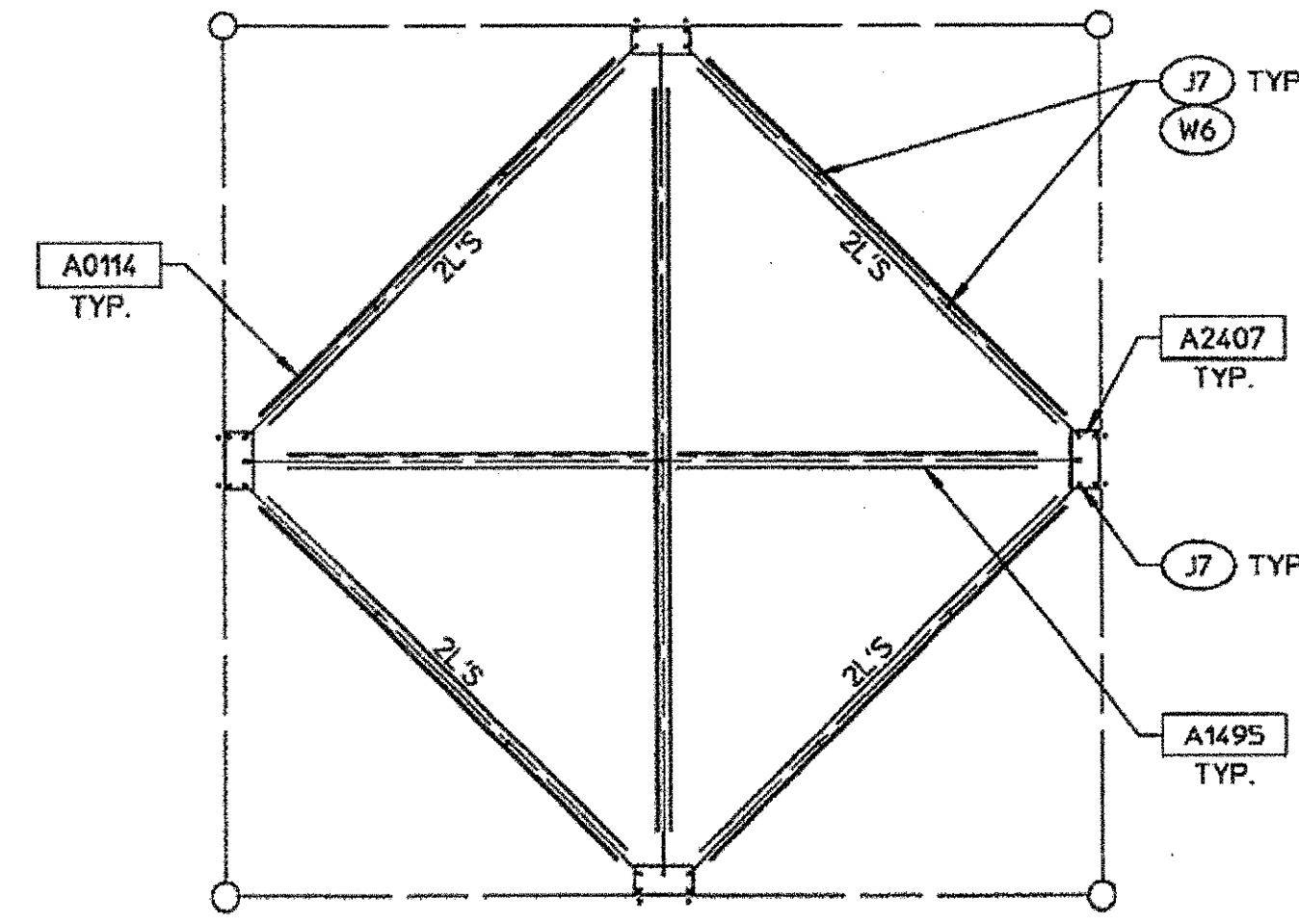
INTERNAL BRACE DETAIL 11
LG1 NTS



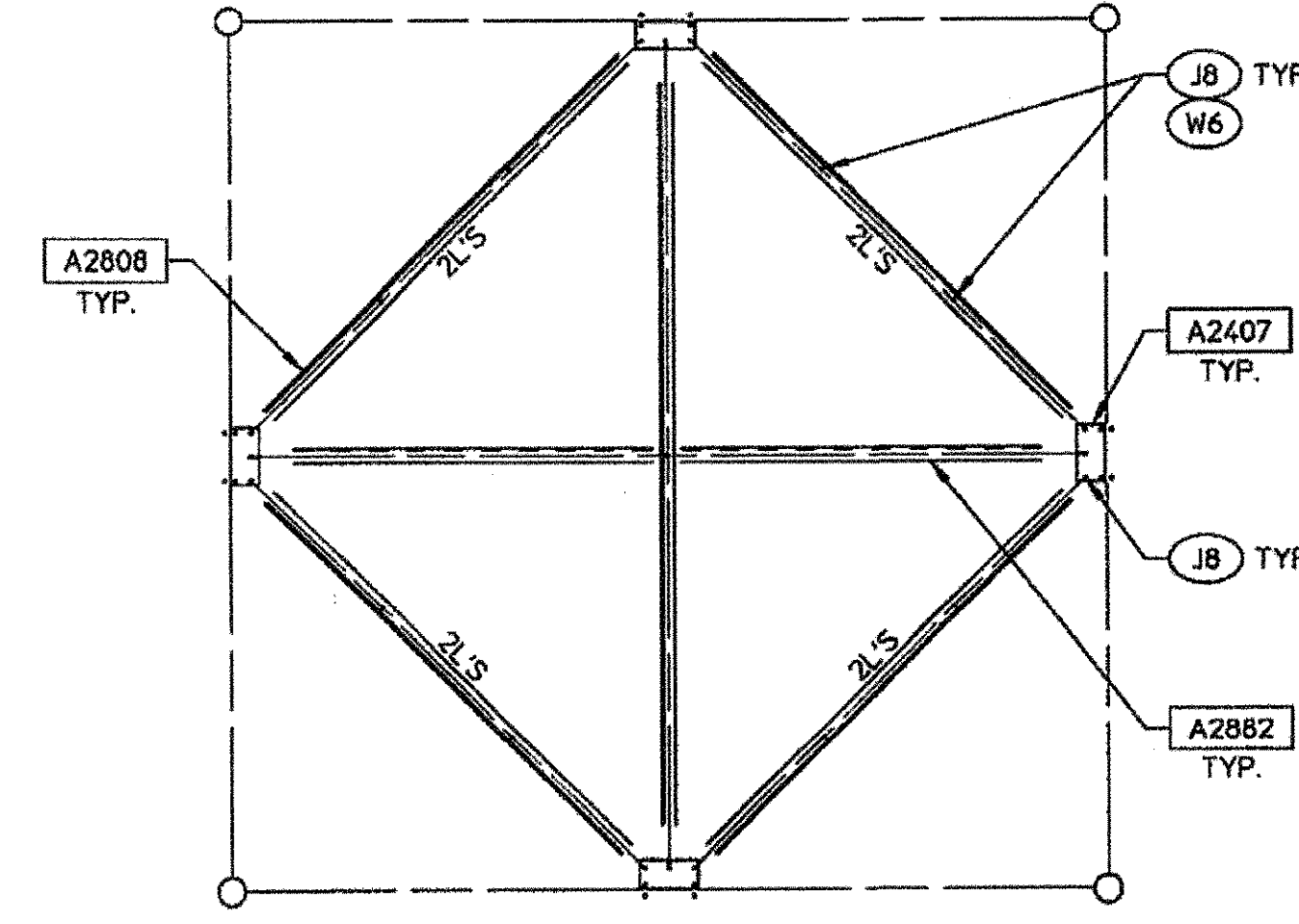
INT BRACE DETAIL 14
NG1 NTS



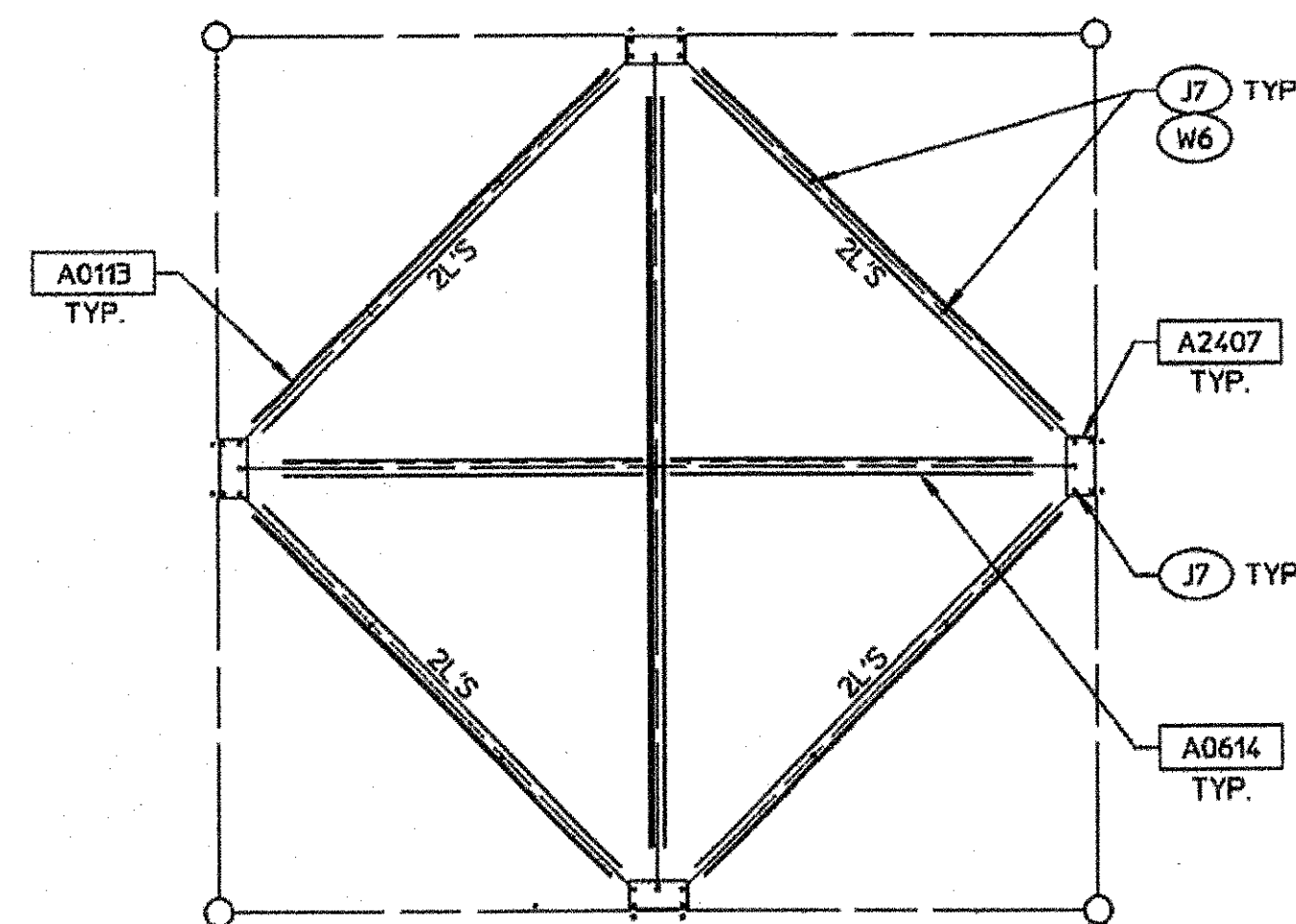
INTERNAL BRACE DETAIL 6
JG2 NTS



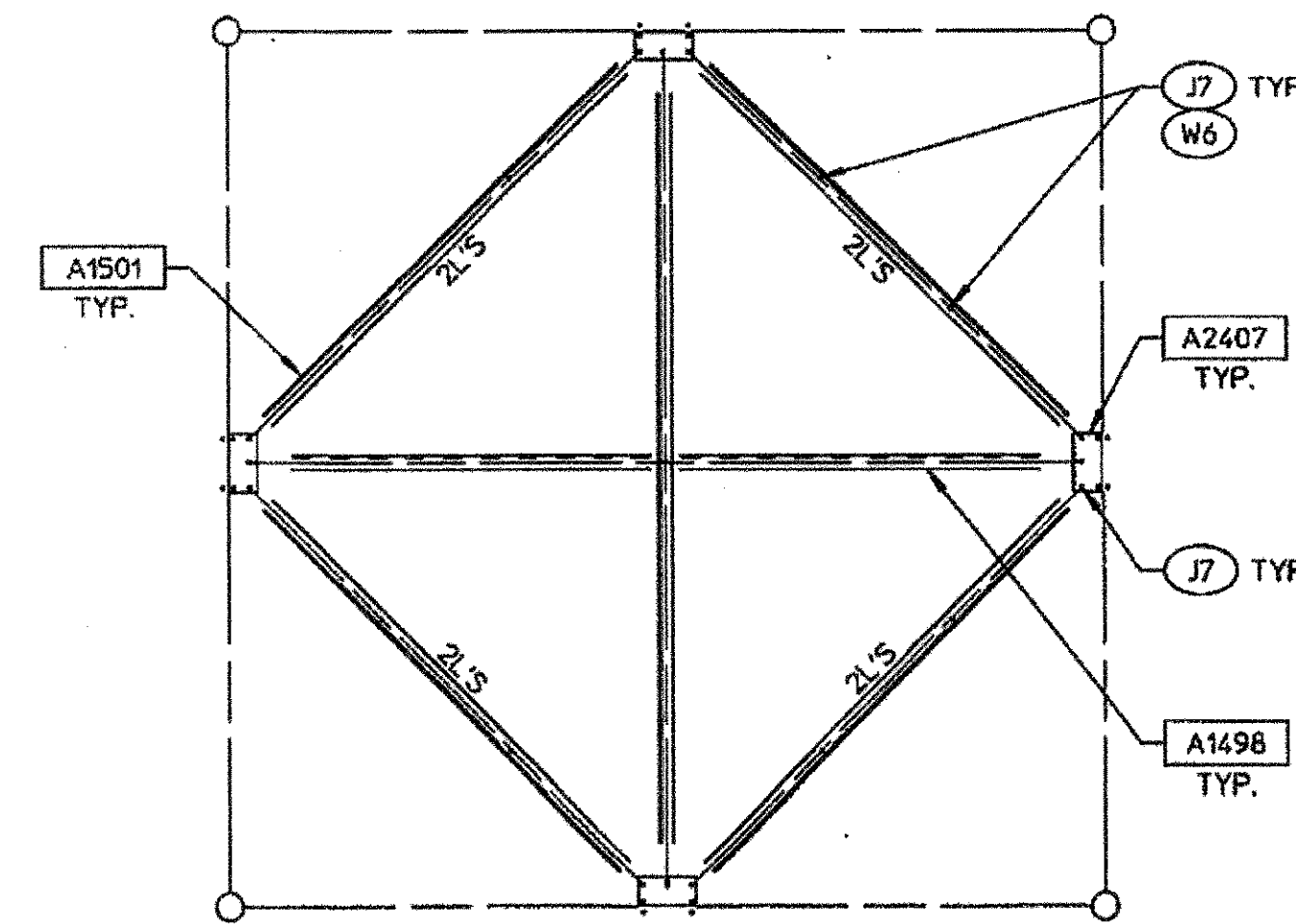
INTERNAL BRACE DETAIL 9
KG1 NTS



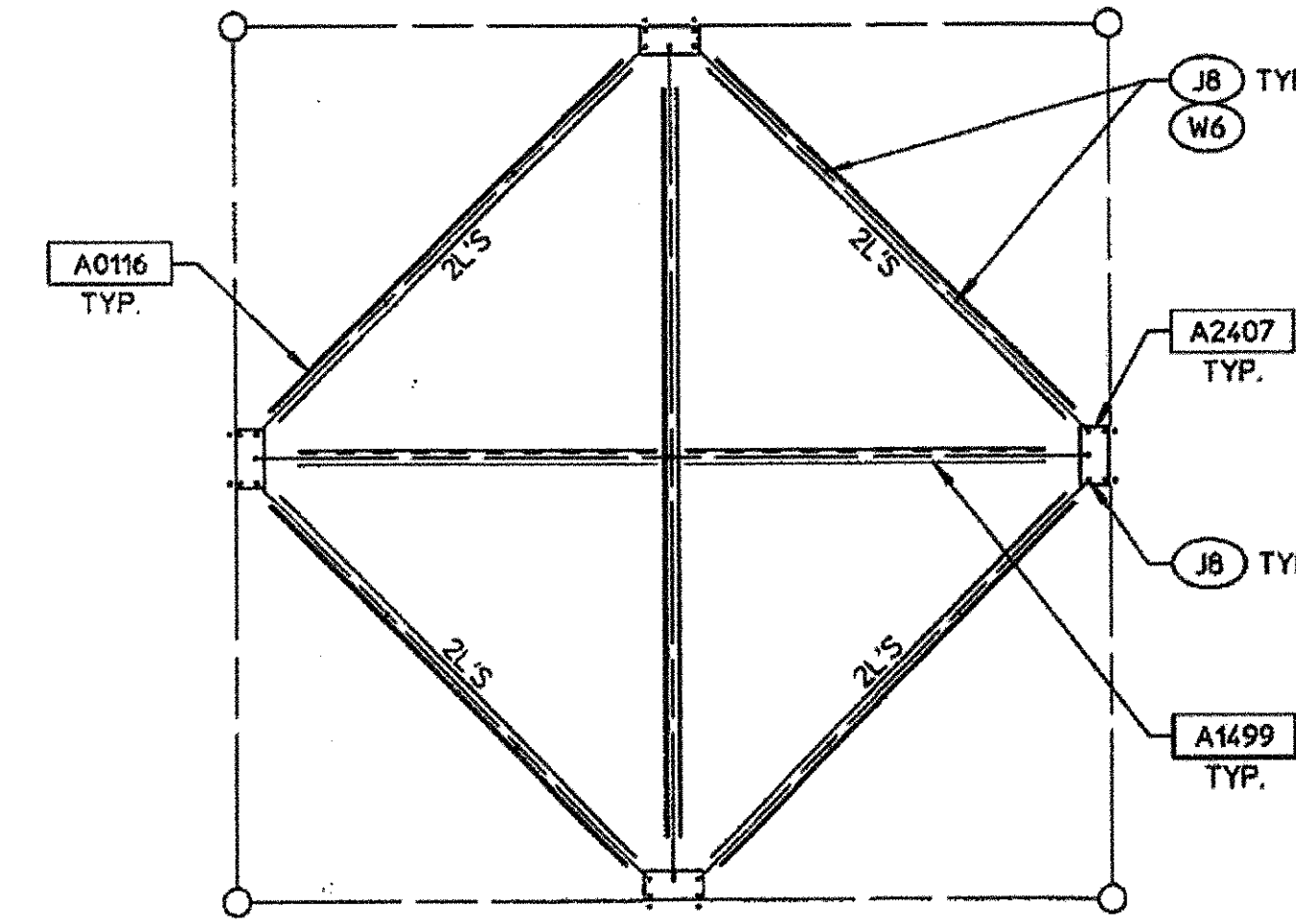
INTERNAL BRACE DETAIL 12
MG2 NTS



INTERNAL BRACE DETAIL 7
JG1 NTS



INTERNAL BRACE DETAIL 10
LG2 NTS



INTERNAL BRACE DETAIL 13
MG1 NTS

REV	DESCRIPTION	DATE	BY/CK
	RELEASED DRAWING TO THE SHOP		
	CHANGES		

INTERNAL BRACING DETAILS
ARIZONA DEPT OF PUBLIC SAFETY
SITE: THOMPSON PEAK, AZ

valmont
STRUCTURES
1-877-467-4763 Plymouth, IN
1-800-547-2151 Salem, OR

BY	SJ	CK	MF	D-125352-3
DATE	13JUN08			
S.O.	11841-08	SHEET:	3 OF 6	