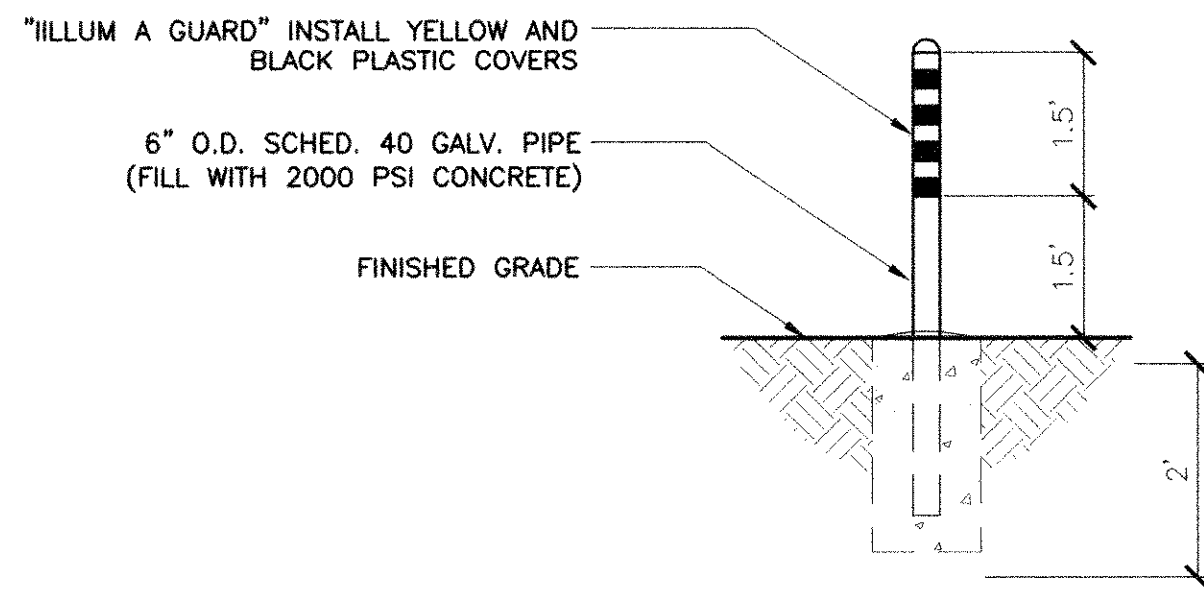
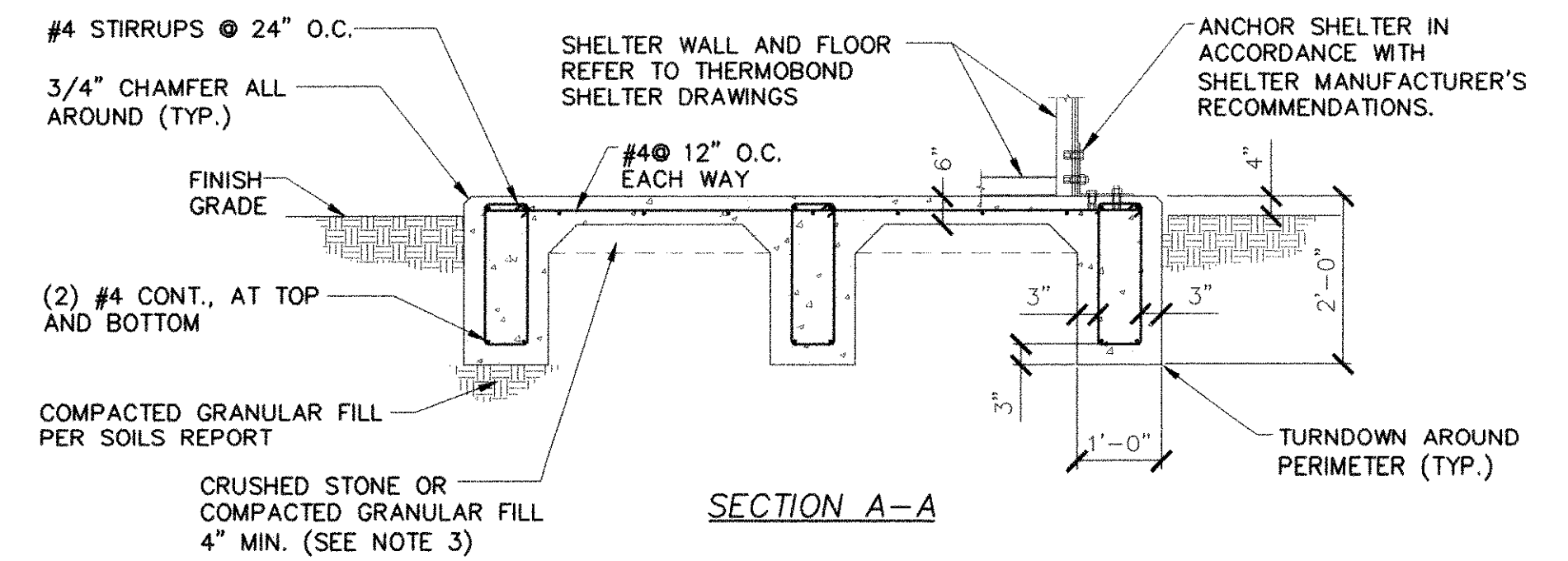
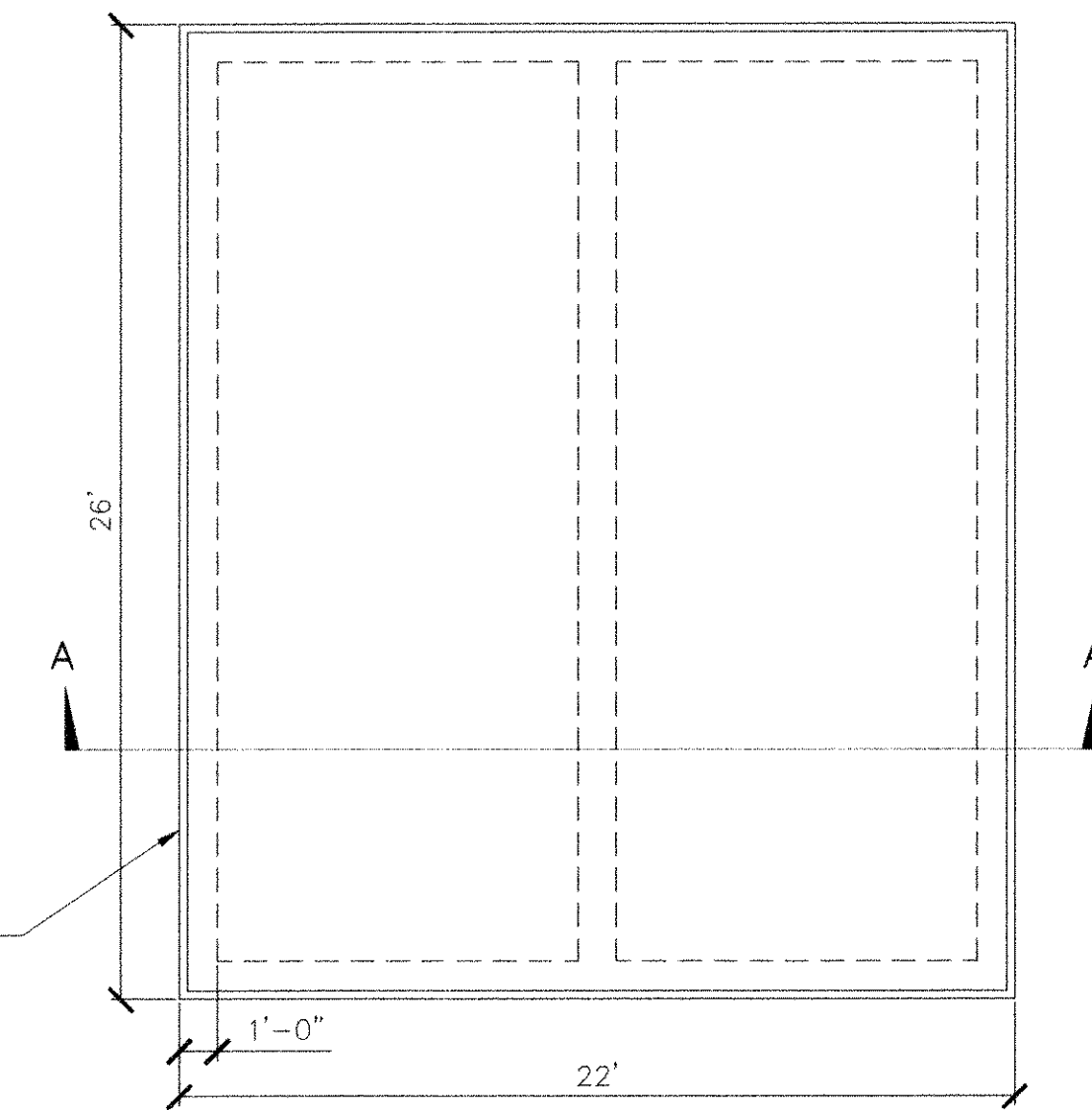


PROPANE TANK
 N.T.S.



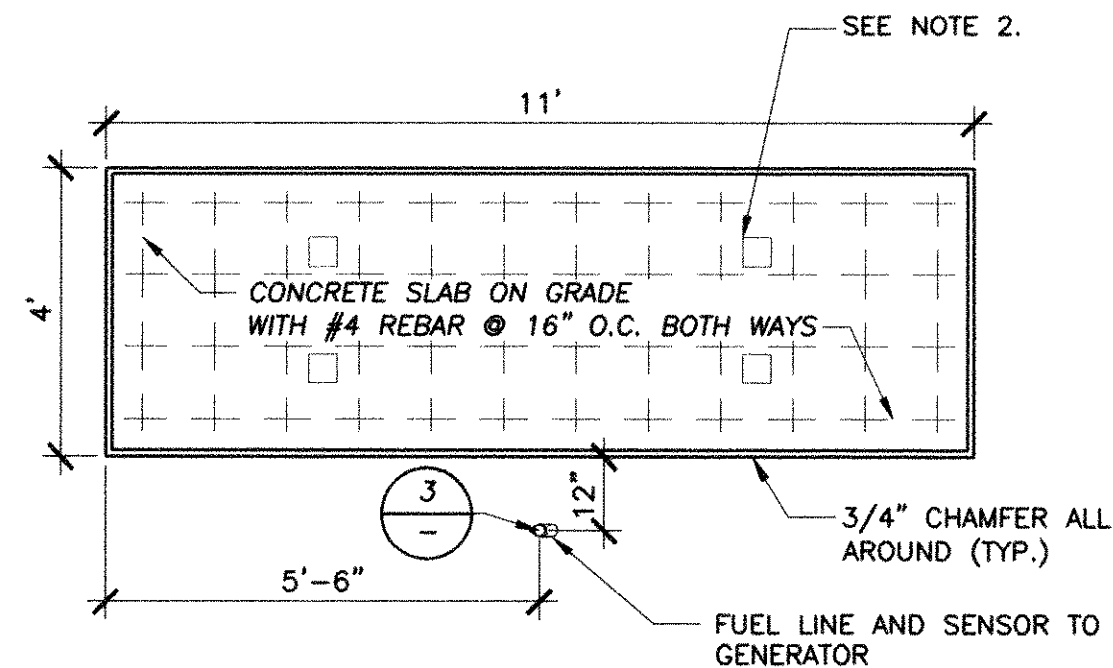
BOLLARD DETAIL
 N.T.S.

- SHELTER FOUNDATION NOTES
1. VERIFY DIMENSIONS WITH SHELTER MANUFACTURER.
 2. REMOVE ALL LOOSE INORGANIC OR UNSUITABLE SOIL TO UNDISTURBED BEARING STRATA.
 3. SUB-GRADE SHALL BE COMPACTED PER SOILS REPORT.
 4. SLAB SHALL BE LEVEL $\pm 1/4"$
 5. SHELTER TIE DOWNS BY SHELTER MANUFACTURER AND ITS ATTACHMENT DETAIL PROVIDED.

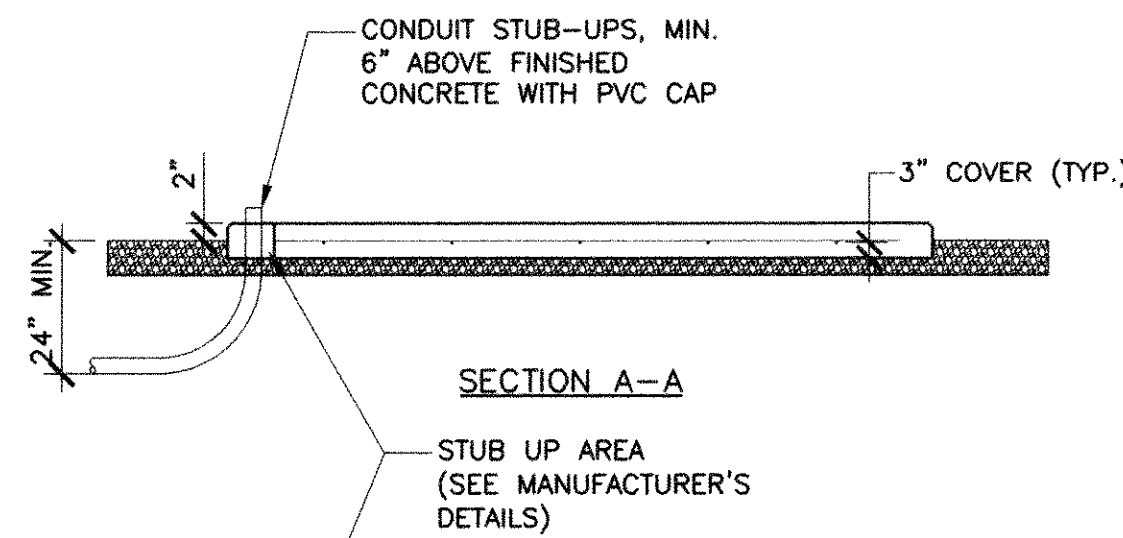


SECTION A-A
 CONCRETE FOUNDATION FOR SHELTER
 N.T.S.

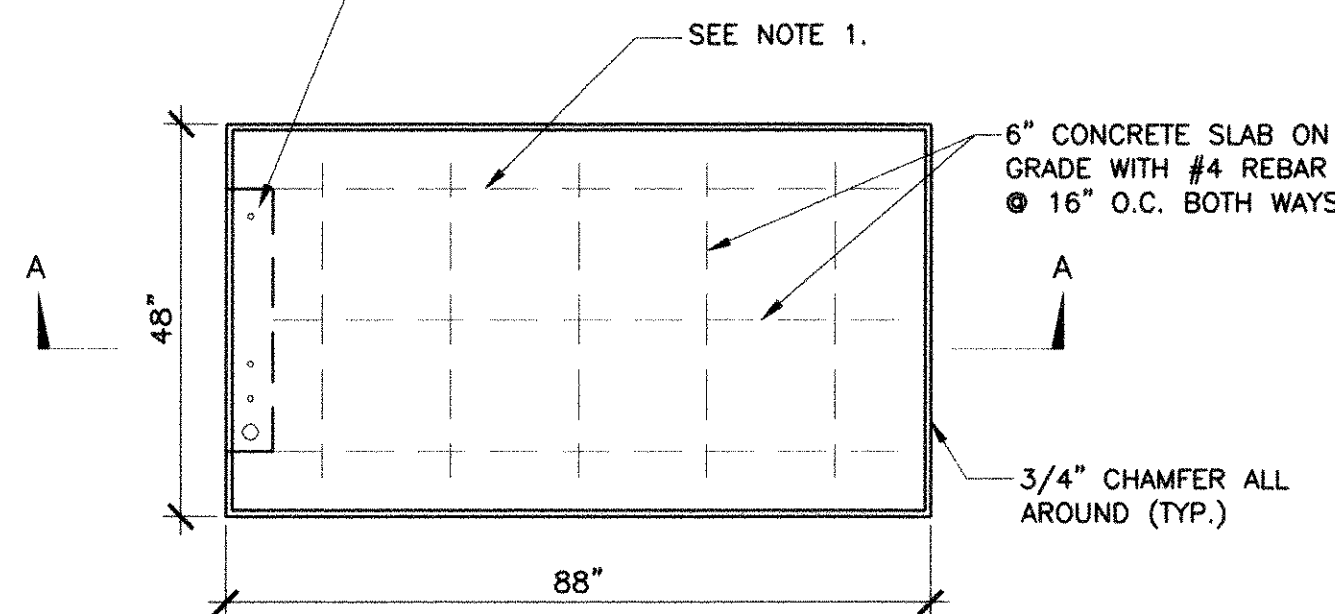
- NOTES:
 1. DETAILS FOR STANDARD PROPANE TANK, PIPING AND CONNECTIONS ARE PER AMERICAN WELDING AND TANK COMPANY SPECIFICATIONS.
 2. PLEASE REFER TO TANK MANUFACTURER'S SPECIFICATIONS FOR ANCHORING DETAIL.



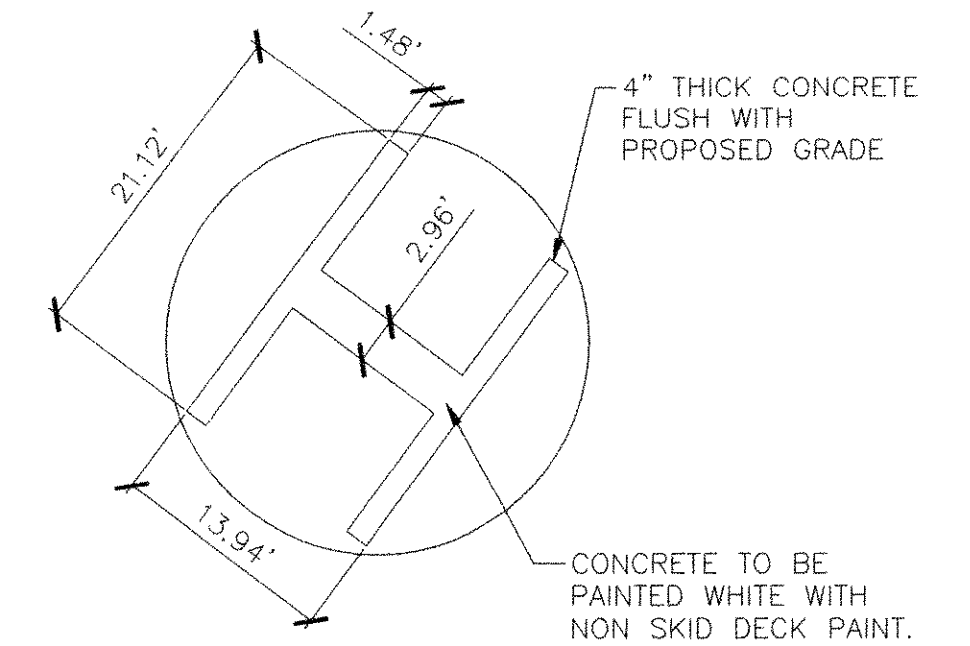
CONCRETE SLAB FOR PROPANE TANK
 N.T.S.



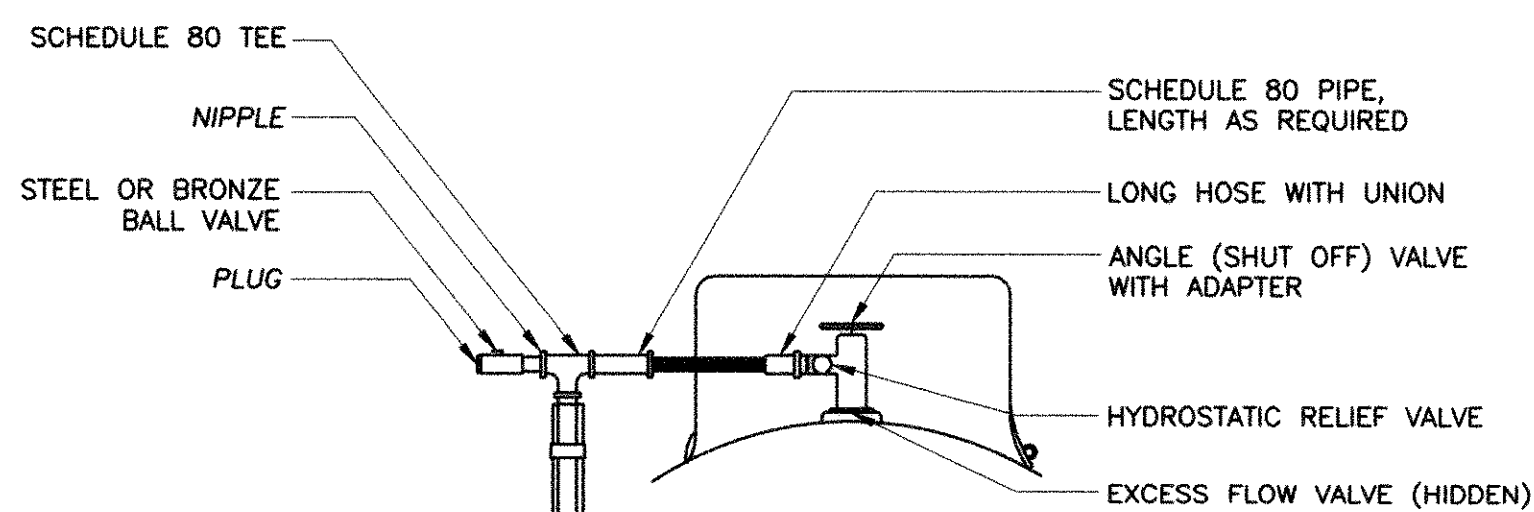
- NOTES:
 1. PLEASE REFER TO GENERAC GENERATOR SGO45 MANUFACTURER'S SPECIFICATIONS FOR ANCHORING AND INSTALLATION DETAILS.



CONCRETE SLAB FOR GENERATOR
 N.T.S.



CONCRETE HELIPAD MARKING
 N.T.S.



PROPANE TANK VALVE ATTACHMENT DETAIL
 N.T.S.

	 2151 EAST BROADWAY ROAD, SUITE 217, TEMPE, AZ 85282 VOICE: 480.905.8889 FAX: 480.905.8818
	CITY OF MESA ENGINEERING DIVISION THOMPSON PEAK COMMUNICATION TOWER
DRAWN BY: BCH ENGINEER: SAM APPROVED BY: F RUSTAM	DRAWING 12
340 W.O. 4399 PROJ. NO. 02-410-001	CATALOG NUMBER: A-139267